

# All In For Kansas Kids



## Kansas Early Childhood Governance Summit

FEBRUARY 17, 2023



# WELCOME

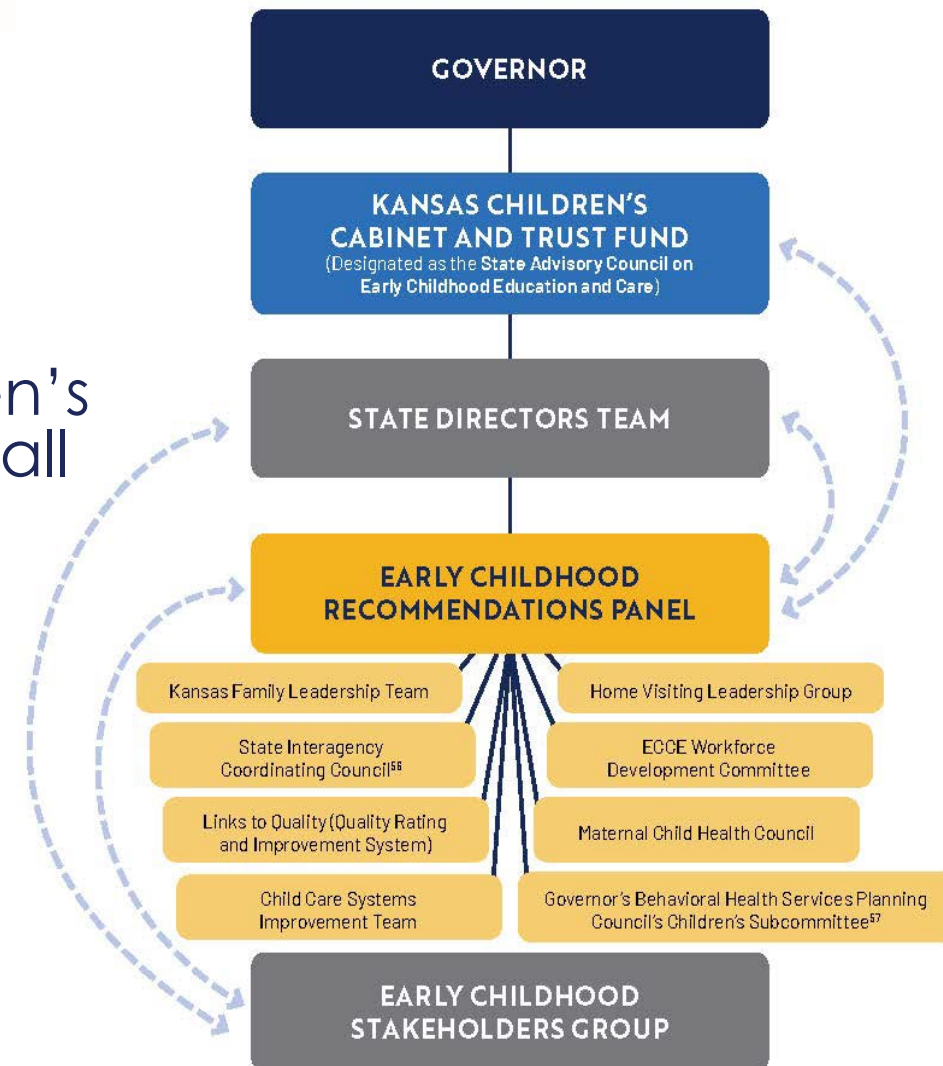
**Thank you** for serving Kansas children, families, and early childhood care and education professionals!

This event is being live streamed on the Children's Cabinet YouTube channel. The recording and all presentation materials are available on the Children's Cabinet website.

Graphic recording by Sara O'Keefe, KU CPPR, will be shared after the event.



## KANSAS EARLY CHILDHOOD GOVERNANCE STRUCTURE



# TODAY'S AGENDA

- Welcome address by Melissa Rooker, Executive Director, Kansas Children's Cabinet and Trust Fund
- Governance Groups Presentations – Part 1
- Break – 10 minutes
- Governance Groups Presentations – Part 2
- Next Steps / Closing





# All In For Kansas Kids



## Welcome Address

MELISSA ROOKER, KCCTF EXECUTIVE DIRECTOR







# Early Childhood Recommendations Panel

CORNELIA STEVENS



# EARLY CHILDHOOD RECOMMENDATIONS PANEL

- Kansas [Executive Order 20-02](#) designates the Kansas Children's Cabinet and Trust Fund as the State Advisory Council on Early Childhood Education and Care.
  - The Panel is an advisory group to the Children's Cabinet to support these responsibilities.
- Meets monthly on the third Friday: 9:00-11:30 a.m.
  - Live streamed on the [Children's Cabinet YouTube channel](#)
  - [Kansans' Open Forum Comment Form](#): submit written comments or sign up to share verbal comments with the Panel during the Kansans Open Forum portion of the meeting.
  - Meeting materials are posted at [kschildrenscabinet.org/panel-meetings](https://kschildrenscabinet.org/panel-meetings).

Overview



# EARLY CHILDHOOD RECOMMENDATIONS PANEL

- The Children's Cabinet appoints members annually to a one-year term: July 1 through June 30
  - Call for membership applications is shared in April
- Currently 37 Panel members, representing:
  - State Agencies
  - Local School Districts
  - Higher Education
  - Local early childhood care and education providers
  - Head Start
  - Parents of young children receiving services in Kansas
  - Organizations providing early childhood services

Overview



# EARLY CHILDHOOD RECOMMENDATIONS PANEL

- A **collaboration survey** conducted over the first two years of Panel membership showed positive connections, with Panel members meeting monthly and Panel workgroups completing targeted tasks between meetings.
- Provided **two recommendations** adopted by the Children's Cabinet in April 2022.
  - Recommended the State Interagency Coordinating Council and Local Interagency Coordinating councils collaborate to implement new strategies.
  - Recommended state agencies and contracted partners utilize federal relief funding to help retain individual child care professionals in licensed settings by issuing one-time individual bonus payments.
- Representatives from state agencies, organizations, and community partners from the Kansas Early Childhood Governance System met on January 21, 2022 for the inaugural **Kansas Early Childhood Governance Summit** to share their work and report how their progress aligns with the *All in for Kansas Kids* **Strategic Plan**.

**Accomplishments**





# EARLY CHILDHOOD RECOMMENDATIONS PANEL

- In March, Tactic Work Groups will develop recommendations to implement tactics from the [AIFKK Strategic Plan](#) by the June Panel meeting.
  - Tactic 7.1.2: Study local zoning and homeowner associations across the state to identify laws that adversely affect the ability to operate a child care business in residential and commercial spaces.
  - Tactic 6.1.1: Develop recommendations to increase compensation and benefits for early childhood care and education professionals.
  - Tactic 6.1.5: Document and address recruitment and retention challenges (includes all early childhood care and education professionals).
  - Strategy 4.2: Promote family-friendly workplaces throughout the public and private sectors.

**Future Efforts**



# EARLY CHILDHOOD RECOMMENDATIONS PANEL

- **Cornelia Stevens, Chair**

- TOP Early Learning Centers, Executive Director
- [cstevens@topelc.com](mailto:cstevens@topelc.com)

- **Lindsay Orion, Panel Support**

- KU CPPR, Research Project Manager
- [lindsayorion@ku.edu](mailto:lindsayorion@ku.edu)

Contact





# Maternal Child Health Council

KAYZY BIGLER



# MATERNAL CHILD HEALTH COUNCIL

## Kansas Maternal Child Health Council (KMCHC) Purpose

- Exchange of information
- Advises on MCH population needs
- Support for improving MCH health outcomes
- Focus efforts and recommend collaborative initiatives

## Council Membership

- State Partners
- Local Public Health
- Private Organizations
- Medical Professionals
- Families/Consumers

Overview





# MATERNAL CHILD HEALTH COUNCIL

## Council Structure

- Meetings held quarterly
- Large group presentations and discussions
- Small group divided by population domains (women/maternal, perinatal/infant, child, adolescents, children and youth with special health care needs)

Crosscutting: Workforce Development and Family Strengthening and Support

**Overview**



# MATERNAL CHILD HEALTH COUNCIL

## April 2022 KMCHC Meeting Focus

- Title V Block Grant overview, review, and input
- 2 small group discussions were held and input gathered was used to improve the Block Grant and strengthen the MCH action plan

## July 2022 KMCHC Meeting Focus

- Title V/Title XIX Partnership
- Presenters: Title V Director and Medicaid Director
- Kansas Medicaid (KanCare) initiatives and updates

**Accomplishments**



# MATERNAL CHILD HEALTH COUNCIL

## October 2022 KMCHC Meeting Focus

- Racial Equity and Justice on MCH
- Presenters: KDHE Interim BFH Director and United Methodist Health Ministry Executive Director
- Neonatal Abstinence Syndrome and Maternal Opioid-Related Diagnoses data presented by the KDHE Epi
- Emerging Substance Use Trends Impacting MCH Populations

## January 2023 KMCHC Meeting Focus

- MCH Block Grant Evaluation: Reflecting on Success Indicators
- Presenters: K U Sensemaking Team

**Accomplishments**



# MATERNAL CHILD HEALTH COUNCIL

## Future Efforts/Focus

- Add council members as needed throughout the year
- Application and review process

## Meeting Topics:

- April 2023: Mental Health with a focus on trainings
- July 2023: Home Visiting
- October 2023: Racial Equity alignment with MCH state recommendation
- January 2024: Yearly MCH Block Grant reflection on success indicators

All information and input gathered from KMCHC members is used to improve Block Grant, MCH Services and Supports, MCH Action Plan, and strengthen partnerships and develop new partnerships identified.

**Future Efforts**





# MATERNAL CHILD HEALTH COUNCIL

- **Kayzy Bigler**

- KDHE, CSHCN Director
- (785) 296-1316
- [kayzy.bigler@ks.gov](mailto:kayzy.bigler@ks.gov)

Contact



# All In For Kansas Kids



## Home Visiting Leadership Group

CARRIE AKIN & DIONE GUYTON



# HOME VISITING LEADERSHIP GROUP

## The Home Visiting Leadership Team is comprised of:

- Children's Cabinet & Trust Fund
- DCCCA
- Kansas Children's Service League (KCSL) Healthy Families America (HFA)
- Kansas City Kansas Parents as Teachers (KCK PAT) USD 500
- Kansas Department for Children & Families (DCF) (Early Head Start & Family First)
- Kansas Department of Education (KSDE)
- Kansas Department of Health & Environment (KDHE)
- Kansas Head Start Association (KHSA)
- Kansas Parents as Teachers Association (KPATA)
- Kansas Early Childhood Developmental Services (Part C)
- Maternal Child Health (MCH) Universal HV (Barton County HD)
- Maternal Child Health (MCH) Universal HV (Shawnee County HD)
- Project Eagle – Centralized Intake
- University of Kansas, Center for Public Partnerships & Research (KU CPPR)

Overview



# HOME VISITING LEADERSHIP GROUP

## Progress and Accomplishments

- Kansas Home Visiting Conference 2022
- Kansas Home Visiting Website Update
- Home Visitor Assessment on Well Being

**Accomplishments**





# HOME VISITING LEADERSHIP GROUP

## Future Efforts and Goals

- Universal Home Visiting Collaboration with the Children's Cabinet and Trust Fund
- Kansas Learning Management System (KS-LMS)
- Readiness Assessment: plan for bringing on new Maternal, Infant, and Early Childhood Home Visiting communities

**Future Efforts**



# HOME VISITING LEADERSHIP GROUP

- **Carrie Akin**

- KDHE, Community Partnership Director
- [carrie.akin@ks.gov](mailto:carrie.akin@ks.gov)

- **Dione Guyton**

- KDHE, Home Visiting Program Manager
- [dione.guyton2@ks.gov](mailto:dione.guyton2@ks.gov)

Contact



# All In For Kansas Kids



**Family Leadership Team**

**CORA UNGERER & JENNY MEMMOTT**



# FAMILY LEADERSHIP TEAM

- Formed in 2021 as part of the PDG and *All in for Kansas Kids* Strategic Plan, with the recognition of the importance of the family voice and how valuable family partnership is.
- Our group is composed of family representatives who are strong advocates for their own families and other families across Kansas, as well as state and community leaders who oversee and support programs dedicated to advancing family engagement and partnership efforts.
- The goal of this working group is to inform, support, develop, and advise on issues and initiatives that engage families to influence and enable systems-level change. More specifically, this group aims to support the healthy growth and development of children and parents, coordinated community services, and cross-systems collaboration and alignment at the state and community level within the ECCE system.

## Overview





# FAMILY LEADERSHIP TEAM

## The Family Leadership Team is guided by the following beliefs:

- Family engagement is foundational to understanding the experiences of those served through state and community programs.
- Family Engagement during program planning, design, implementation, and evaluation are crucial to assure that programs meet the needs of those they intend to serve.
- Family Engagement is imperative to foster healthy development and encourage the well-being of children, youth, and families in Kansas.
- Family engagement can help prevent child abuse, foster school readiness, increase community engagement, promote family economic success, and create opportunities for the enhancement of parenting skills.
- The best approach to family engagement is multi-generational, strengths-based and family-centered.
- "Family" looks different for everyone and it is important to include diverse family representatives on the FLT to bolster the voices of all families.

Overview



# FAMILY LEADERSHIP TEAM

## Progress and Accomplishments

- Held regular, quarterly meetings between 2021 and 2023.
- Navigated through team leadership and member changes in 2022, and made progress in formalizing team makeup. Continue to work on recruiting more parent volunteers and voices for the FLT.
- Created FLT Engagement document, which was officially adopted by the FLT in January 2023. This document outlines the purpose, common definitions, guiding principles, and shared responsibilities of the FLT.
- Identified several possible topics/areas to work on/target as a group moving forward.

**Accomplishments**



# FAMILY LEADERSHIP TEAM

## Current and Future Efforts

- Working towards solidifying the group's structure and expectations, as well as brainstorming future projects and recommendations.
- Current discussion of moving our meeting to a more unconventional time to accommodate families and to be more supportive of their involvement.
- Collaborate across agencies to help break down silos.
- Utilizing the family voice to drive positive change for all families across the state.

## Future Efforts



# FAMILY LEADERSHIP TEAM

## Current Members

- Cora Ungerer, KDHE
- Jenny Memmott, KU CPPR Support
- Cassandra Sines, Parent Advocate
- Kate Jones-Roggenbaum, Parent Advocate
- Rachel Gardner, KU CPPR Support
- Tabatha Rosproy, KPIRC
- Jennifer Adhima, Kansas Headstart
- Hannah White, KCCTF
- Megan Smith, DCF
- Lesli Girard, Families Together Inc.
- Leiane Watts, Family Advocate
- Kayla Cary, KCSL
- Kassi McDowell (KFAN)
- Chris Tilden, KU CPPR Support

**Members**



# FAMILY LEADERSHIP TEAM

- **Cora Ungerer**

- KDHE, Family & Consumer Partnership Program Coordinator
- [cora.ungerer@ks.gov](mailto:cora.ungerer@ks.gov)

- **Jenny Memmott**

- KU CPPR, Consultant
- [jmemmott\\_sta@ku.edu](mailto:jmemmott_sta@ku.edu)

Contact







# Family Advisory Council

CORA UNGERER



# FAMILY ADVISORY COUNCIL

The purpose of the Family Advisory Council (FAC) is to advise and partner with Title V and the Bureau of Family Health to improve the health of Kansas children and families and assure the needs of families and consumers are central to programming initiatives, and special projects.

We bring together families and consumers across Kansas with a broad range of lived experiences, the Council envisions a state where individuals and families are:

- Engaged in program planning, evaluation, service delivery, and policy development
- Partners in advocacy
- Leaders in their communities

**Overview**



# FAMILY ADVISORY COUNCIL

## To follow through with our vision at KDHE, members of the FAC will:

- Provide insight on the experiences and needs of women, infants, children, and adolescents
- Advise on strategies and activities to address specific MCH population needs
- Create a network of community change agents to improve MCH health outcomes in Kansas
- Help focus efforts among Title V programming and recommends collaborative initiatives
- Oversee core work groups that reflect MCH populations
- Meet quarterly to share work that is happening across the state

Overview



# FAMILY ADVISORY COUNCIL

## Core Work Groups Reflecting MCH Populations:

- Women/Maternal
- Early Childhood (birth-age 5)
- Child (ages 6-11)
- Adolescence (ages 12+)
- Children with Special Health Care Needs (CSHCN)

Each work group gets to review our Title V Action Plan, have discussions on what they feel are larger issues they see in their communities, and find a "project" that can help drive some of that work forward. Their projects can look like many different things, from providing recommendations to the state to helping design or re-design a currently existing program.

**Overview**



# FAMILY ADVISORY COUNCIL

## Focus on the Early Childhood Work Group:

The Early Childhood work group has been very interested in connecting families to resources.

Some of their discussion topics have included:

- What is an easy way to share resources with providers
- Create an informational campaigns for families and providers
- Discussion around pinpointing underserved and potentially missed families, and more!

At our last meeting, in January, we honed in on several issues that we were all passionate about and wanted to work on moving forward.

## Accomplishments





# FAMILY ADVISORY COUNCIL

## 2023 Work Group Initiatives:

- **Women/Maternal:** very interested in peer connections and increasing supports for women who are pregnant and one year postpartum. Will be working with KDHE to help with the development of a Supporting You program for this population.
- **Early Childhood:** focusing on prevention and resources for families. Want to create a plan for a Universal Discharge Plan for New Parents for hospitals and birthing centers to adopt with KDHE's support as "Best Practices." Would include easy to access resources via technology.

**Future Efforts**



# FAMILY ADVISORY COUNCIL

## 2023 Work Group Initiatives:

- **Child and Adolescence:** these two work groups have combined to focus on mental and behavioral health for school-aged kids. They are working on creating a conference session to be presented at the Parent Leadership Conference, where they will hold focus groups with families about their struggles and success in identifying mental or behavioral health services/needs for their children.
- **CSHCN:** working with the Charting the Life Course Experiences and Questions booklet. They are currently working through the "Transition" life stage. Their goal is to go through the questions in each life domain and think of what may be helpful for Kansas. Their outcome goal is to create a Kansas "companion guide" for how to utilize this booklet.

Future Efforts



# FAMILY ADVISORY COUNCIL

We cannot express how much we value the amazing individuals that make up our council and work groups!

We currently have some spots available on each of the work groups. If you or someone you know would be interested in applying for the council we have an online application for them to fill out, as well as more information which can be found on our [website](#).

**Thank You**



# FAMILY ADVISORY COUNCIL

- **Cora Ungerer**

- KDHE, Family & Consumer Partnership Program Coordinator
- [cora.ungerer@ks.gov](mailto:cora.ungerer@ks.gov)

Contact





# Child Care Systems Improvement Team

MELISSA SCHOENBERGER





# CHILD CARE SYSTEMS IMPROVEMENT TEAM

**The Child Care Systems Improvement Team is an advisory group to KDHE that focuses on Child Care Licensing.**

- Started work again in 2020 after a several year break as part of PDG
- Group is comprised of stakeholders from across the state and early childhood care and education system
- Group meets monthly

**Overview**



# CHILD CARE SYSTEMS IMPROVEMENT TEAM

**In 2021, the group put forth 14 recommendations to:**

- Improve clarity of regulations (e.g. staff qualifications)
- Increase resources and supports for prospective and current child care providers
- Develop toolkit for home-based applicants interested in becoming child care providers
- Develop awareness campaign focused on why licensing is important and how it connects to quality child care

**Accomplishments**



# CHILD CARE SYSTEMS IMPROVEMENT TEAM

**Three new work groups started meeting in fall 2022 and are currently developing additional recommendations for:**

- System Engagement and Communication
- Regulations and Best Practices
- Provider Supports

**Future Efforts**



# CHILD CARE SYSTEMS IMPROVEMENT TEAM

- **Melissa Schoenberger**

- KDHE, Field Services Supervisor
- [melissa.Schoenberger@ks.gov](mailto:melissa.Schoenberger@ks.gov)

- **Meghan Kluth**

- KU CPPR, Research Project Manager
- [mkluth@ku.edu](mailto:mkluth@ku.edu)

Have ideas for something the Child Care Systems Improvement Team or Child Care Licensing program could explore? Let us know! Please contact Meghan Kluth at [mkluth@ku.edu](mailto:mkluth@ku.edu).

**Contact**



# All In For Kansas Kids



**BREAK**





# All In For Kansas Kids



## Kansas Early Learning Standards

NATALIE MCCLANE & KIM KENNEDY



# KANSAS EARLY LEARNING STANDARDS

The Kansas Early Learning Standards Revision Group is working with early childhood experts across Kansas State Agencies to update the current Kansas Early Learning Standards that were last updated in 2013. The core group has met twice a month over the past year to update the standards and are joined once a month by content area specialists to discuss each of the content standards in the document.

**Overview**



# KANSAS EARLY LEARNING STANDARDS

## Progress and Accomplishments

- Making standards more user-friendly for all early childhood professionals and families
- Focus on Diversity, Equity, and Inclusion
- Met monthly to review each of the content areas in the standards with content experts and have made it through 7 of the 8 standards to date

**Accomplishments**



# KANSAS EARLY LEARNING STANDARDS

## Future Plans and Goals

- Wrap up last Content Area
- Print and distribute hard copies statewide by the end of the year
- Build a website for the standards to include examples of how the standards could look in practice, how professionals could encourage growth, and possible adaptations for students with differing abilities
- Develop training for the field on how to use the KELS in practice

**Future Efforts**



# KANSAS EARLY LEARNING STANDARDS

- **Natalie McClane**

- KSDE, Education Program Consultant
- (785) 296-5081
- [nmcclane@ksde.org](mailto:nmcclane@ksde.org)

- **Kimberly Kennedy**

- DCF, Head Start Collaboration Director
- (785) 386-6354
- [kimberly.kennedy@ks.gov](mailto:kimberly.kennedy@ks.gov)

Contact







# State Interagency Coordinating Council

LISA COLLETTE & STACY NOVAK





# STATE INTERAGENCY COORDINATING COUNCIL

## Mission

- The SICC is to ensure that a comprehensive service delivery system of integrated services is available in Kansas to all children with, or at risk of, developmental delays or disabilities from birth through age five and their families.

## Council Membership

- Established in federal law and state statute

## Council Responsibility

- Advise/assist Governor, Legislature, and State Agencies

Overview



# STATE INTERAGENCY COORDINATING COUNCIL

## Why Do We Have A SICCC?

- Federal Law – Individuals with Disabilities Education Act (IDEA)  
Public Law 108-446 Section 641
- State Statute 74-7801 to 74-7803

Overview



# STATE INTERAGENCY COORDINATING COUNCIL

## Progress and Accomplishments

- EC LRE: Survey Conducted, Focus Group Held
- Funding and Personnel: Examination of funding for EI and ECSE programs, initial evaluation of personnel needs
- Support of Local ICC's: Annual Meeting, developed guidance for LICC small grants, development of Handbook, conducting orientation
- Social Emotional Development: examination of issues, participation in another state committee examining infant/toddler mental health and Part C

**Accomplishments**



# STATE INTERAGENCY COORDINATING COUNCIL

## Future Goals and Efforts

- Continue examination of state performance on EC LRE indicators
- Examine opportunities for diverse funding of EI programs
- Initiation of small grants for LICCs
- Engage other groups focusing on social emotional development

**Future Efforts**



# STATE INTERAGENCY COORDINATING COUNCIL

- **David Lindeman, PhD**

- Lifespan Institute at Parsons, Senior Scientist
- SICCC Chair
- (620) 448-3089
- [lindeman@ku.edu](mailto:lindeman@ku.edu)

- **Lisa Collette**

- Firefighter Relief Fund, Program Specialist
- SICCC Vice-Chair
- [lisa.collette@ks.gov](mailto:lisa.collette@ks.gov)

- **Stacy Novak**

- KSDE, EPC
- State ICC Facilitator/Local ICC Support
- [snovak@ksde.org](mailto:snovak@ksde.org)

- **SICCC Staff**

- (785) 296-3953
- [kansassicc@ksde.org](mailto:kansassicc@ksde.org)

Contact





# Family First Statewide Interagency and Community Advisory Board

KAELA BYERS, PHD, MSW & MEGHAN CIZEK, MA, LCSW





# FAMILY FIRST STATEWIDE ICAB

The **Interagency and Community Advisory Board (ICAB)** is a Kansas cross-system, multi-agency, and community collaboration that was established to support two statewide implementations:

- The Family First Prevention Services Act
- Kansas Strong for Children and Families

The ICAB's overarching goal is to support and activate a comprehensive service array that spans a broad continuum of care for families by:

- Building cross-sector knowledge of needs, gaps, challenges, and best practices
- Using data and continuous quality improvement to monitor processes and outcomes
- Developing and executing action plans to address service gaps

Overview



# FAMILY FIRST STATEWIDE ICAB

## Family First Prevention Services Act Policy Recommendation Brief

- The Statewide ICAB developed a policy brief highlighting the limitations of the current interpretation of the law and posed recommendations for improvement.

## Parent Survey Impact

- Identified service array strengths and needs at county and regional levels
- Identified gaps for families involved with the child welfare system
- Strategized for local, regional, and statewide action to address gaps

**Accomplishments**



# FAMILY FIRST STATEWIDE ICAB

## Family First Family Council

- Individuals with lived experience in the child welfare system/prevention services serve in an advisory capacity on the ICAB
- Amplifying family voices to drive systems change and planning efforts
- Shifting the system towards a philosophy of shared power and family support

## Priority Mapping Impact

- Developed shared understanding across sectors of child and family-serving initiatives and priorities
- Supported collaboration and reduced redundancies
- Highlighted service gaps

**Accomplishments**



# FAMILY FIRST STATEWIDE ICAB

## The Intersection of Child Care and Child Welfare in Southeast Kansas Brief

- Southeast Regional ICAB identified the lack of child care in their region as a significant contributing factor to families encountering the child welfare system
- Regional ICAB researched the issue and posed recommendations

**Accomplishments**



# FAMILY FIRST STATEWIDE ICAB

## Future Direction of the Family Statewide ICAB

- Continued exploration of racial equity in child welfare
- Continued exploration of the intersection of child welfare and child care
- Family First policy and outcome review
- Review and feedback on new child and family initiatives
- Ongoing advocacy training
- Data collection and engagement (i.e., stories, parent surveys, arts-based research)

**Future Efforts**



# FAMILY FIRST STATEWIDE ICAB

- **Kaela Byers, PhD, MSW**
  - KU SSW, Associate Research Professor
  - [kaela@ku.edu](mailto:kaela@ku.edu)
- **Meghan Cizek, MA, LCSW**
  - KU CPPR, Assistant Director
  - [mcizek@ku.edu](mailto:mcizek@ku.edu)

Contact





# All In For Kansas Kids



**Kansas Early Childhood  
Data Trust Governance  
Board**

TERI GARSTKA, PHD



# KANSAS EARLY CHILDHOOD DATA TRUST

The Kansas Early Childhood Data Trust, formed in 2021, is designed to turn insight into action for children, families, providers, communities, and agencies in Kansas.

The Kansas Early Childhood Data Trust uses data to answer vital questions about the existing effectiveness, quality, availability, and equity of programs serving children and their families. By sharing data across partners, leaders are better equipped to make data-informed decisions and follow the long-term impact of those decisions.

**Overview**



# KANSAS EARLY CHILDHOOD DATA TRUST

A Data Trust Agreement was signed in 2021.

Governance structure (operational in 2022) allows state agencies and partners responsible for administering early childhood programming to steward data for the collective benefit of all children in Kansas.

The Kansas Early Childhood Data Trust currently includes five state agencies in partnership to share data between them more easily. These include:

- Kansas Children's Cabinet (Trustee)
- Kansas State Department of Education
- Department of Children and Families
- Kansas Department of Health and Environment
- Kansas Department of Corrections

**Overview**



# KANSAS EARLY CHILDHOOD DATA TRUST

Signing the Data Trust Agreement in 2021 signaled an intentional move toward collaboration, transparency, and ethical harnessing of Kansas' early childhood data.

In 2021, linking Early Childhood Block Grant/Community-based Child Abuse Prevention (ECBG/CBCAP) data to foster care data concluded that **ECBG/CBCAP services significantly reduced the likelihood of removals into foster care in Kansas.**

**Accomplishments**



# KANSAS EARLY CHILDHOOD DATA TRUST

In 2022, the Data Trust approved a collaborative effort across state agencies and their data systems to identify a distinct number of children served in programs at the state level.

To serve children and families effectively, the Kansas early childhood system must know the population it serves.

**Future Efforts**



# KANSAS EARLY CHILDHOOD DATA TRUST

Future efforts will be pursued as authorized by the Data Trust.

May include efforts in mapping parent and family engagement, equity analysis, efficiency in service delivery, and other important questions.

The Data Trust Governance Board continues to mature.

New opportunities will emerge for understanding and better serving Kansas kids and families.

**Future Efforts**





# KANSAS EARLY CHILDHOOD DATA TRUST

- **Teri Garstka**

- KU CPPR, Associate Director
- [garstka@ku.edu](mailto:garstka@ku.edu)

Contact





# Quality Recognition and Improvement System Advisory Board

SARAH MINSHULL



# QRIS ADVISORY BOARD

The Child Care Quality Improvement and Support System focuses on the systems, policies, and practices that impact the creation of high-quality early care and education programs for children birth through school age.

The Child Care Quality Improvement and Support System prioritizes reducing the burden of participation on child care providers and improving the ability of families to recognize and choose quality early care and education.

**Overview**



# QRIS ADVISORY BOARD

- Direct support and assistance to child care providers
- Fostering collaboration with and among providers in peer groups

## **Program Administration Support:**

- Budgets & cash flow
- Family contracts and handbooks
- Marketing and advertising
- Websites and social media accounts
- Business cards
- Software management systems
- Program security systems
- Office organization
- Employee handbooks, contracts, hiring, etc.
- Staffing, scheduling, evaluations, development, etc.

**Accomplishments**



# QRIS ADVISORY BOARD

## Links to Quality:

- Program Administration
- Family Partnerships
- Health and Safety
- Learning and Development
- Other topic areas TBD

## Learning Communities

- Peer networking
- Learning opportunities
- Access to trainings and speakers
- Mentorship
- Regional approach

**Accomplishments**



# QRIS ADVISORY BOARD

## Future Efforts:

- Expanding the availability of statewide resources
- Establishing a shared services network

**Future Efforts**





# QRIS ADVISORY BOARD

- **Sarah Minshull**

- Child Care Aware, Director of Innovation, Programs, and Strategy
- [sarah.minshull@ks.childcareaware.org](mailto:sarah.minshull@ks.childcareaware.org)

Contact



# All In For Kansas Kids



Children's Subcommittee of the  
**Governor's Behavioral Health  
Services Planning Council**

ERICK VAUGHN, LMSW



# BEHAVIORAL HEALTH SERVICES CHILDREN'S SUBCOMMITTEE

The Children's Subcommittee generates recommendations for the Governor's Behavioral Health Services Planning Council (GBHSPC) regarding the Behavioral Health System of Kansas as it relates to Kansas children and their families.

The GBHSPC reviews not just this subcommittee's recommendations but other existing subcommittees and presents all Behavioral Health recommendations to the Secretary of KDADS and the governor.

It is acknowledged that although the priority focus of the GBHSPC are the SPMI and SED target populations (Federal law 102-321), the work of the subcommittee is to be conducted with the whole system and all Kansas citizens with behavioral health needs in mind.

**Overview**



# BEHAVIORAL HEALTH SERVICES CHILDREN'S SUBCOMMITTEE

## Goal 1: Children with Dual Diagnoses

- Explore and identify the need and gaps in services for Dually Diagnosed children (IDD/MH; ASD/BH) including workforce issues such as lack of training and availability of providers, funding, system involvement and limits.

## Goal 2: KSKidsMAP

- Continue to serve as the advisory council for KDHE's KSKidsMAP pediatric mental health grant.
- Make progress on the recommendation to sustain the program by continuing to research and identify opportunities or actions for the committee or others to take to sustain the project.

**Accomplishments  
and Goals**



# BEHAVIORAL HEALTH SERVICES CHILDREN'S SUBCOMMITTEE

## Goal 3: Continuum of Care and Parent and Community Engagement

- Explore how Community Mental Health Centers, Federally Qualified Health Centers, Psychiatric Residential Treatment Facilities, and Qualified Residential Treatment Programs collaborate with primary care providers, caregivers and parents, school, and other agencies.

**Accomplishments  
and Goals**



# BEHAVIORAL HEALTH SERVICES CHILDREN'S SUBCOMMITTEE

## **KSKidsMAP:**

- Continue to serve as the advisory council and support the sustainability of the KSKidsMAP program.

## **Parent Engagement:**

- Review the system of care to identify current resources and needs, make recommendations to ensure parents know what services are available and how to access them (and professionals are educated to refer parents/caregivers to services/support).
  - Navigator
  - Mental Health First Aid Training
  - Presentation from SMHI

**Future Efforts**





# BEHAVIORAL HEALTH SERVICES CHILDREN'S SUBCOMMITTEE

## Diversity, Equity, and Inclusion:

Focus on unserved and underserved populations with a focus on race, ethnicity, gender identity, language, and culture.

- Professionals with a level of cultural humility and curiosity
- Consistency and direction (Best Practices)
- Culturally and Linguistically Appropriate Services (<https://thinkculturalhealth.hhs.gov/clas>)
- Make sure to discuss the role and importance of care coordinators at the MCO's

**Future Efforts**



# BEHAVIORAL HEALTH SERVICES CHILDREN'S SUBCOMMITTEE

- **Erick Vaughn, LMSW**

- Douglas County CASA, Executive Director
- Past Chair
- (785) 832-5172
- [evaughn@dccasaks.org](mailto:evaughn@dccasaks.org)

Contact



# All In For Kansas Kids



## Workforce Development Advisory Group

LINDA LOGAN & PATTY PESCHEL



# WORKFORCE DEVELOPMENT ADVISORY GROUP

The Workforce Development Advisory Group's purpose, under funding from DCF, is to establish a workforce facilitation center to be guided by an advisory committee of early childhood partners to coordinate a comprehensive and systematic approach to workforce development throughout Kansas.

Currently there are over 50 members that represent multiple state and local agencies, organizations, and programs.

Workgroups have been formed in the following areas:

- Core Competencies
- Equity-Inclusion-Diversity (EID)
- Individualized Professional Development Plans (IPDP)
- Needs Assessment (annual)

**Overview**



# WORKFORCE DEVELOPMENT ADVISORY GROUP

## Core Competencies

- Presented recommendations for adaptation of Nebraska Core Competencies for Early Childhood Professionals and mutually end the partnership between Kansas and Missouri and the use of the KS/MO Core Competencies. The Kansas Children's Cabinet Executive Board approved the recommendation on December 7, 2022. The adaptation work is on two 6-month timelines. January-June, 2023 and July-December 2023 with a completed product done by the end of the year.

## Accomplishments



# WORKFORCE DEVELOPMENT ADVISORY GROUP

## Equity-Inclusion-Diversity

- Developing Kansas Early Childhood Equity Guiding Principles. We have reviewed the Early Childhood Iowa Equity Guiding Principles during this time. The goal is to define equity and clarify jargon and wording for an accessible and user-friendly resource.

## Individualized Professional Development Plans

- Open access online course (on KCCTO, Canvas) is developed and ready to be distributed. IPDP forms are in a fillable PDF format for electronic submission or print.

**Accomplishments**





# WORKFORCE DEVELOPMENT ADVISORY GROUP

## 2022 Needs Assessment

- Completed in November with over 1700 respondents. Data is being analyzed and the information will be shared at the February 22<sup>nd</sup> Workforce Advisory Group meeting. There will be a request form distributed and placed on the KCCTO website for requests for information.

**Accomplishments**



# WORKFORCE DEVELOPMENT ADVISORY GROUP

## Coming in 2023

- Career Pathways alignment with Core Competencies, Kansas Early Learning Standards, IPDP, and Registry components
- Open Access Online Course through KCCTO (Canvas) on the Core Competencies and how to use them for the workforce
- Statewide Trainer and Training Approval System
- Comprehensive Technical Assistance Collaboration Group

**Future Efforts**



# WORKFORCE DEVELOPMENT ADVISORY GROUP

**We welcome interested individuals to join any of our monthly group meetings:**

- Workforce Development Advisory Group – 4<sup>th</sup> Wednesday at 2:00 p.m.
- Equity-Diversity-Inclusion Workgroup – 4<sup>th</sup> Tuesday at 11:30 a.m.
- Core Competencies – 3<sup>rd</sup> Tuesday at 1:00 p.m.
- Individualized Professional Development Plans – 3<sup>rd</sup> Wednesday at 2:00 p.m.

Please contact **Linda Logan** for more information. (785) 532-7197 – [lindalogan@ksu.edu](mailto:lindalogan@ksu.edu)

Thank you to all of the agencies that provide representation in the Workforce Development Advisory Group and Workgroups!

**Thank You**



# WORKFORCE DEVELOPMENT ADVISORY GROUP

- **Linda Logan**

- KCCTO, Program Coordinator
- (785) 532-7197
- [lindalogan@ksu.edu](mailto:lindalogan@ksu.edu)

- **Patty Peschel**

- KCCTO, Workforce Development Director
- [pkeating@ksu.edu](mailto:pkeating@ksu.edu)

Contact



# THANK YOU FOR PARTICIPATING!

- Keep an eye out for the Early Childhood Governance Summit graphic recording and event summary on the Children's Cabinet website <https://kschildrenscabinet.org/>
- Contact Lindsay Orion, [lindsayorion@ku.edu](mailto:lindsayorion@ku.edu), with follow up questions or requests for information.

**Next Steps**





# Stay Up to Date



[ALL IN FOR KANSAS KIDS NEWSLETTER](#)



[@KCCTF](#)



[KANSASCHILDRENSCABINET](#)

