

All In For Kansas Kids



Strengthening Early Childhood in Kansas

WEBINAR MARCH 8, 2023



WELCOME

- Welcome everyone!
- Quick Updates
 - Don't forget our new monthly webinar schedule
 - Sign up to receive our Weekly All In For Kansas Kids Newsletter on the Children's Cabinet website – www.kschildrenscabinet.org
- Presentation from Kansas Association for Infant and Early Childhood Mental Health
- Early Childhood Systems Updates

Agenda



2023 Webinar Schedule

~~January 11~~
~~February 8~~
March 8
April 19
May 17
June 14
July 12
August 9
September 20
October 18
November 15
December 13

Nurturing Healthy Early Relationships



All In For 
Kansas Kids

Who We Are

KAIMH's mission is to advance the field of infant and early childhood mental health.

Accomplished through...



Promoting and advocating for public policies that advance the importance of social and emotional development of infants and young children.



Professional recognition and connection through the KAIMH Infant Mental Health Endorsement®



Providing educational opportunities on infant and early childhood mental health.



What is IMH Endorsement[®] ?

- The Endorsement for Culturally Sensitive, Relationship-focused Practice Promoting Infant and Early Childhood Mental Health (IMH-E[®]) documents **competency** in the infant, young child-family field.
- It **recognizes** professionals who understand these concepts and apply them to their work with families.





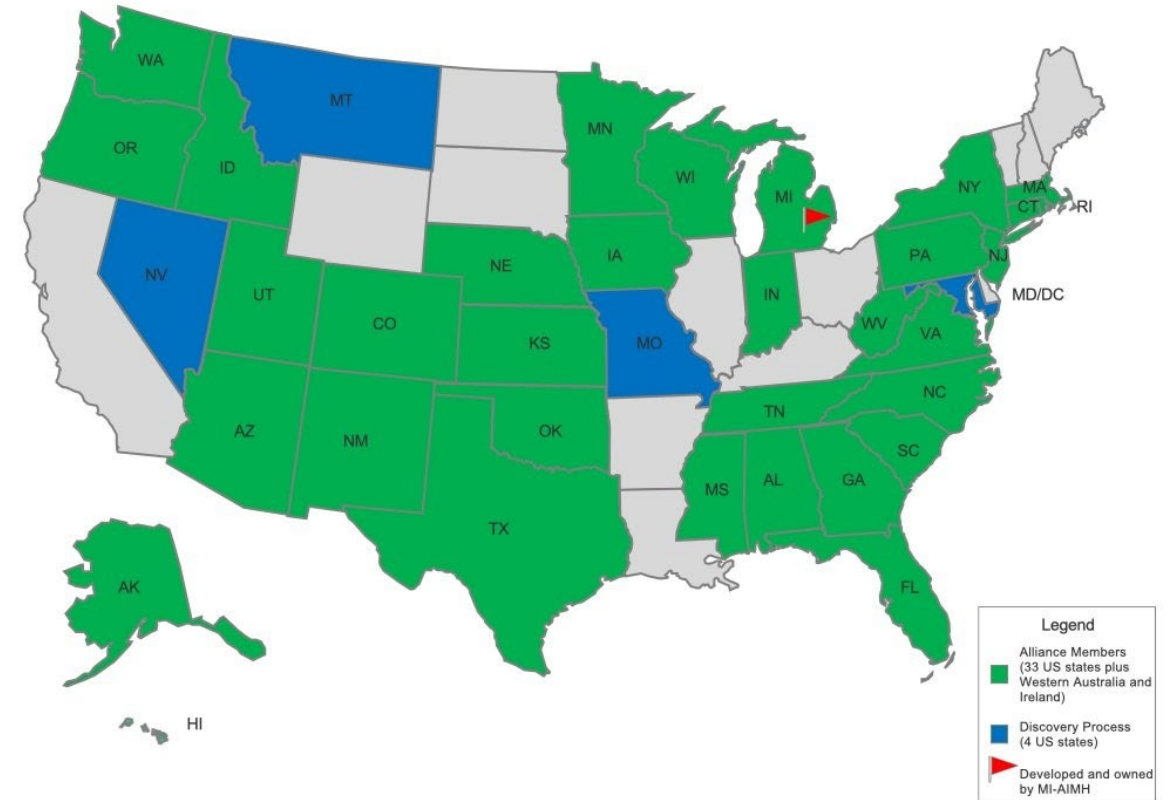
Infant Mental Health Endorsement: Why Kansas?

- Professionals focusing more specifically on issues of infancy and early childhood mental health.
- Cross-disciplinary relevance of infant and early childhood mental health.
- Provides credibility for professionals engaged in the critical work of supporting young children's social-emotional health & well-being.
- Formally recognizes infant and early childhood mental health expertise across the state.

.....

Alliance for the Advancement of Infant Mental Health

Currently there were a total of **5296** Infant *Mental Health* Endorsed® professionals!
131 of these professionals are in Kansas.



Alliance for the Advancement of
Infant Mental Health



Alliance for the Advancement of
Infant Mental Health

Infant Mental Health Endorsement (IMH-E ®)

- Recognizes *achievement* of knowledge and training
- Recognizes *specific work* with infants and toddlers (ages 0-3) and their caregivers
- Identifies *best practice* competencies at multiple levels and across disciplines
- Offers a *pathway* for professional development in the infant, early childhood and family field

Why is the *IMH* *Endorsement*® Important to Me & My Professional Development?

"It holds us to a higher standard; being Endorsed means you may be able to educate families better on infant mental health."

Having a grounding and being knowledgeable in Infant Mental Health changed the way I work – 180 degrees. Going through the process...refreshed my thinking and re-inspired my work."

"...with and Endorsement, it guarantees you have a certain amount of experience, training and education, and reflective supervision. You're held to these competencies..."

"I have noticed the shift that the Endorsement has had in the workforce. People are taking it seriously and using it to plan their professional development and seek out additional skills. It is such an important support for us. Thank you!"



Endorsement[®] IMH-E[®]

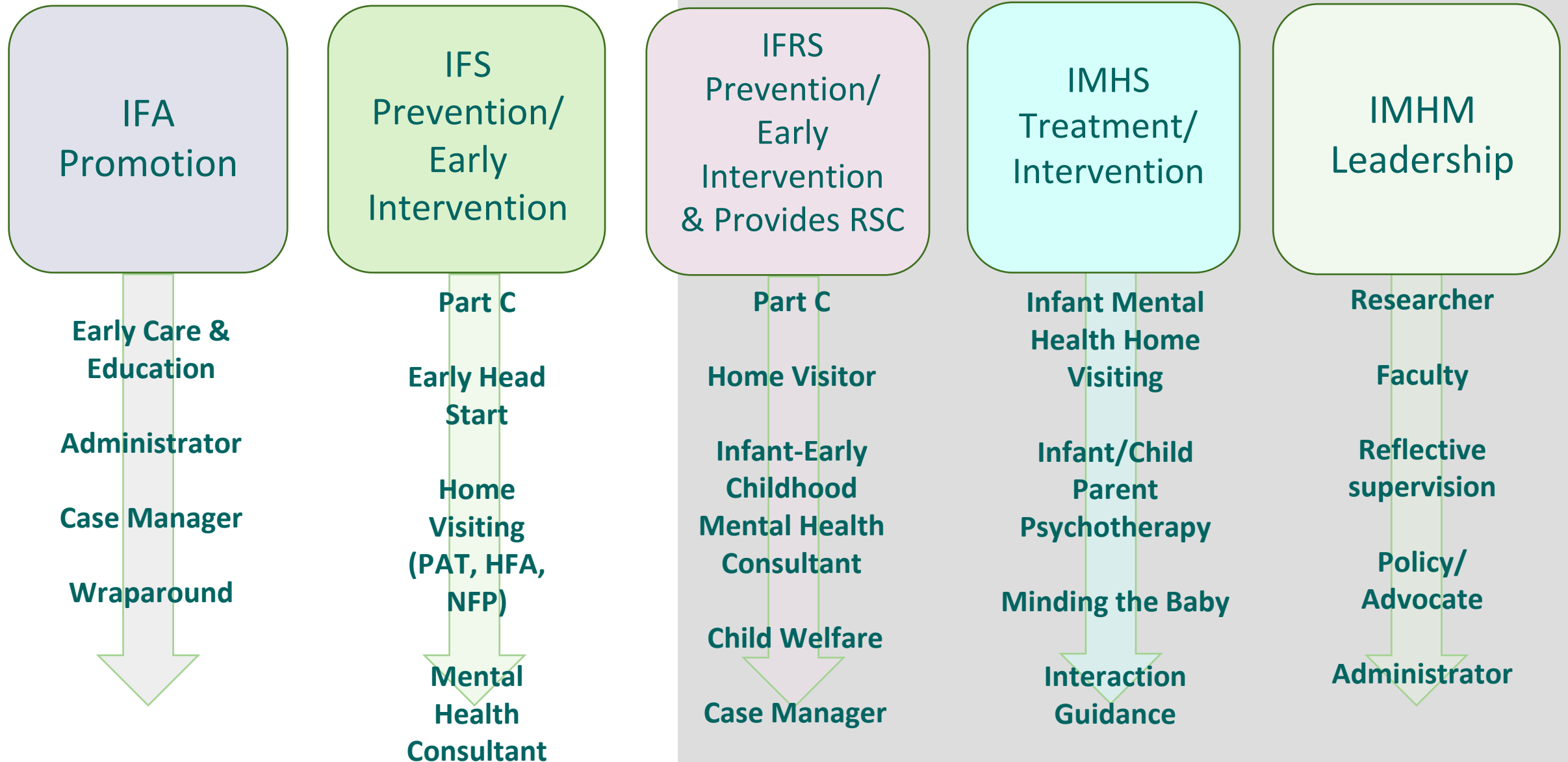
Infant Mental Health Endorsement

- Infant Family Associate (IFA)
- Infant Family Specialist (IFS)
- Infant Family Reflective Supervisor (IFRS)
- Infant Mental Health Specialist (IMHS)
- Infant Mental Health Mentor (IMHM)

*Clinical, Policy, Research/Faculty

Also available: Spanish-language versions of *Competency Guidelines*[®], IMH Endorsement[®], and EASy application

Endorsement® 5 Career Pathways



8 Endorsement® Competencies

- Theoretical Foundations
- Law, Regulation & Agency Policy
- Systems Expertise
- Direct Service Skills
- Working with Others
- Communicating
- Thinking
- Reflection





Reflective Supervision/Consultation

- Specific type of supervision that is the standard of practice in the early childhood field.
- Distinction due to the shared exploration of the parallel process.
 - **All of the relationships are important**
 - How do each of these relationships affect the others?
 - Attend to the **emotional content of the work and how reactions to the content affect the work.**



Reflective Supervision

Requirements for provision of Reflective Supervision to meet KAIMH IMH Endorsement® criteria:

- KAIMH Endorsement® at:
 - Infant Family Specialist
 - Infant Family Reflective Supervisor
 - Infant Mental Health Specialist
 - Infant Mental Health Mentor - Clinical
- AND training specific to the provision of Reflective Supervision

All In For Kansas Kids

3 Years of Progress & Activities:

- ★ 48 Newly Endorsed Professionals
 - 73 more in process
- ★ 18-Month RSC Learning Collaborative
 - 12 new RSC Groups
- ★ Professional Development:
 - Annual Conference & Fall Learning Series
- ★ Updated Website, Media & Marketing
- ★ Strengthened Statewide Partnerships



ANNUAL
CONFERENCE

April 27-28, 2023

Wichita, KS



**Registration
Now Open!**

kaimh.org/conference/



Keynote
Allie Ticktin, MA,
OTD, OTR/L

Occupational
Therapist &
Founder of
Play2Progress

“Understanding the Sensory System and Its Importance in Early Childhood Development and Social-Emotional Regulation.”

Keynote
George Thompson, MD

“Who Decides If I’m Safe: Polyvagal Theory in Infant Mental Health”



For More Information:

www.kaimh.org info@kaimh.org

Beth Blubaugh, LCMFT, IMH-E®

KAIMH Endorsement® Coordinator

beth@kaimh.org

Marie Treichel, IMH-E®

KAIMH Project Manager

marie@kaimh.org



FIRST 1,000 DAYS KANSAS SUMMIT

- This Thursday, March 9, 2023 from 9 am-4:30 pm in Topeka, KS. ([Register Here](#))
- **Save the Date** for this unique event which will bring decision-makers and thought leaders together to explore policy solutions that will help families thrive during the period of the parent's pregnancy through their child's 2nd birthday.
- Blythe Thomas, Initiative Director of 1,000 Days, will kick off the Summit by centering the importance of the first 1,000 days.

Events



EARLY CHILDHOOD CONFERENCES IN APRIL

- [CCPC Virtual PLAY Academy](#) Tuesday and Thursday evenings throughout the month of April. ([Register Here](#))
- [Kansas Early Literacy Symposium](#) April 14, 2023 in Topeka, KS. \$20 cost includes lunch and 5 KDHE licensing hours. ([Register Here](#))
- [Kansas Parents As Teachers Association 2023 Conference](#) April 17-18, 2023 in Salina, KS. ([Register Here](#))
- See a list of [all upcoming conferences](#).

Upcoming Conferences



BEHAVIOR/SOCIAL-EMOTIONAL ON-SITE TRAINING FOR EARLY CHILDHOOD TEACHERS

Join the Kansas MTSS & Alignment team as they facilitate a continuation of free PD opportunities with Barbara Kaiser.

- April 24, 2023: Hays, KS
Hilton Garden Inn, 9:00am-3:00pm ([Register Here](#))
- April 25, 2023: Wichita, KS
DoubleTree by Hilton-Wichita Airport, 9:00am-3:00pm ([Register Here](#))
- April 26, 2023: Topeka KS
The Foundry, 9:00am-3:00pm ([Register Here](#))

**Professional
Development**



MATERNAL MENTAL HEALTH TRAINING SCHOLARSHIP

PSI Kansas and Kansas Connecting Communities are excited to announce a perinatal mental health education scholarship opportunity!

- Interested providers can apply using this form: [2023 PSI Kansas Training Scholarship](#)
- Check out a list of PSI approved trainings at the [Postpartum Support International website](#).
- Questions? Contact psiksoffice@gmail.com.

Professional
Development



KANSAS
CONNECTING
COMMUNITIES



KANSAS
MATERNAL &
CHILD HEALTH



KPATA NEW MONTHLY TRAINING SERIES

- Monthly training series for teachers and educators, all trainings are **FREE** and available to all current KPATA members.
- Each month will feature a different topic relevant to early childhood and family issues:
 - April 20th - Child Abuse & Neglect with KSCL
 - May 17th- Substance Use Disorder with Supporting Families


Professional
Development



TRAINING SCHEDULE

PARENT EDUCATORS AND COORDINATORS
KPATA BRIGHT FUTURES 2022-23

JULY podcast PRACTICE SELF-COMPASSION 7/28 1:00-2:30 PM	AUGUST <i>Teeth for Two</i> - Oral Health Coalition - 8/18 PAOLA, KS 9/15 HUTCHINSON, KS	SEPTEMBER BREASTFEEDING & MATERNAL MENTAL HEALTH - KS BREASTFEEDING COALITION - 9/22 1:00-2:30 PM
OCTOBER Postpartum Depression - Next Steps After Screening - 10/20 1:00-2:30 PM	NOVEMBER ACES TRAINING - KCSL - 11/17 1:00-3:00 PM	DECEMBER <i>POSITIVE SUPPORTS</i> <i>Impact On Family Well-Being</i> 12/15 1:00-3:00 PM
JANUARY ORAL HEALTH 1/19 1:00-2:30 PM	FEBRUARY POSTPONED TO MAY Racial Equity A FOUNDATION OF UNDERSTANDING 5/4 1:00-2:30PM	MARCH <i>Domestic Violence</i> - IMPACT ON YOUTH - 3/2 1:00-5:00 PM
APRIL <i>Child Abuse & Neglect</i> KCSL 4/20 1:00-3:00 PM	MAY <i>Substance Use Disorder</i> Supporting Families 5/17 1:00-2:30PM	JUNE No Training This Month

 **kpata**
KANSAS PARENTS AS TEACHERS

TRAINING OPPORTUNITIES

- **KCTTO:** Kansas Child Care Training Opportunities (KCCTO) offers a variety of trainings and other professional development opportunities for early childhood care & education professionals. [Scholarships are available!](#) Explore the [KCCTO website](#) to see what offerings might match your needs!
- **Child Abuse Prevention Training:** KCSL is now offering several trainings for child abuse prevention, which also qualify for child care licensing hours. Learn more and register for sessions at the [KCSL website](#).
- **Greenbush:** Greenbush is an educational service center and has a wide variety of virtual and in-person trainings, workshops, and continuing education for educators in Kansas! Find out more about Greenbush and explore their event offerings at the [Greenbush website](#).

**Professional
Development**



KANSAS CHILD CARE CAPACITY ACCELERATOR

- The Kansas Child Care Capacity Accelerator will support community-based teams, including early childhood providers and champions, employers, and economic development leaders, in their efforts to create affordable and accessible child care seats in their communities.
- Learn more at [All In For Kansas Kids](#).

**Community Grant
Opportunities**



REMINDERS AND NEXT STEPS

- **Early Childhood Recommendations Panel Meeting**

March 24th, 9-11:30 am

- **Early Childhood Systems Building Webinar**

April 19th, 12-1:00 pm

- Sign up for the All In For Kansas Kids Weekly Email Newsletter at www.kschildrenscabinet.org

- Let us know what topics you're interested in, or if you have information to share in the webinars or weekly email newsletter.

Stay Connected!





Thanks!





Stay Up to Date



[ALL IN FOR KANSAS KIDS NEWSLETTER](#)



[@KCCTF](#)



[KANSASCHILDRENSCABINET](#)

