

All In For Kansas Kids



Strengthening Early
Childhood in Kansas

WEBINAR OCTOBER 9, 2024



WELCOME

- Sign up to receive our All In For Kansas Kids e-Newsletter on the Children's Cabinet website – <http://www.kschildrenscabinet.org/>
- Presentation from Innovation Communities grantees led by Meghan Kluth of KU CPPR

Agenda



2024 Webinar Schedule

~~January 10th~~
~~February 14th~~
~~March 13th~~
~~April 10th~~
~~May 8th~~
~~June 12th~~
~~July 10th~~
~~August 14th~~
~~September 11th~~
October 9th
November 13th
December 11th



Innovation Communities Grantee Panel



INNOVATION COMMUNITIES

- As part of the Child Care Capacity Accelerator in 2023, 16 communities across Kansas were awarded Innovation Communities grants
- These communities tested innovative, locally-driven strategies for child care
- Grant period was from July 1, 2023 – June 30, 2024

**Child Care Capacity
Accelerator**



INNOVATION COMMUNITIES

Six categories:

- Public/Private Partnerships
- Workforce Recruitment and Retention
- Child Care Plus Models
- Infant/Toddler Incentives
- Rural Child Care
- Increased Access through Non-Traditional Service Hours or Targeted Populations

**Child Care Capacity
Accelerator**



INNOVATION COMMUNITIES

- Grantees participated in monthly coaching and peer learning sessions.
- We have learned an incredible amount from these grantees!
- These projects took courage, vulnerability and adaptability. Every single project had at least one pivot along the way.
- Today you will hear from several grantees about their projects and how they are continuing to address child care in their communities.

**Child Care Capacity
Accelerator**





Dickinson County Child Care Accelerator

Customized Early Education Substitute Program

ROBIN HANSEN



DICKINSON COUNTY CHILD CARE ACCELERATOR CUSTOMIZED EARLY EDUCATION SUBSTITUTE PROGRAM

- Hire and train Early Childhood substitutes
- Serving 13 counties in Kansas
- Rural and Urban counties
- Various types of programs
- Expanding across Kansas
- Partnered with DCF Shared Service Network Hubs
- More information support@customizedearlyeducation.com

**Bridging the EC
Workforce Gap**



CUSTOMIZED EARLY EDUCATION

Robin Hansen, CEO

www.customizedearlyeducation.com

support@customizedearlyeducation.com

(785) 263-6312

Contact Info



All In For Kansas Kids



**USD 461 Neodesha Early
Learning Center**
USD-ELC Partnership

KAITLYN SUNDBERG



INTRODUCTION

- New to Kansas!
- Graduated from University of California, Riverside with my Bachelors in Liberal Studies with a focus on Elementary Education.
- While taking some time off from school I fell in love with Early Childhood Education!
- I have been working in Early Childhood Education for over 6 years.

Kaitlyn Sundberg



USD #461 EARLY LEARNING CENTER



Timeline:

- Groundbreaking : September 28th, 2023
- Doors Open: August 15th, 2024

Neodesha, KS



USD #461 EARLY LEARNING CENTER



Neodesha, KS



PROJECT DESCRIPTION

Workforce Recruitment & Retention

- Partnered with larger companies in the community.
 - Businesses in the community donated money to help us raise \$70,000 for a Patterson family Foundation Match Grant, rewarding us with a total of \$140,000.
 - The big donors in our community, Cobalt Boats, USD 461, Neodesha Plastics, State Farm and Wilson Medical Center, receive 50% off childcare tuition at the ELC for their employees.

USD - ELC Partnership



PROJECT DESCRIPTION

CTE Pathway Program with Neodesha High School

- As part of our Innovations Grant, we created an Early Childhood Development Pathway Program at Neodesha High School.
- Juniors and Seniors enrolled in this program go through all the steps a teacher at the ELC would go through and are able to intern 4-5 days a week at the ELC for 2 hours at a time!
 - KCCTO Course
 - Interview
 - Trainings

**USD – ELC
Partnership**



NUMBER OF CHILDREN SERVED

The USD #461 Early Learning Center is licensed to serve up to **100 children** from ages **2 weeks – 5 years old**, or until they start kindergarten.

- **Infants** (2 weeks – 1 year & walking) : **9 children** in one classroom.
- **Toddlers** (1 year & walking – 2 years) : **20 children** between 2 classrooms.
- **Preschool** (2 years – 3 years) : **28 children** between 2 classrooms.
- **Pre-K** (3 years – 5 years) : **43 children** between 2 classrooms.



PIVOTS

- Infant Room Wall
 - 3 ft requirement to not being a requirement at all.
- Opening Day

KDHE Regulations



ADVICE

- Just breathe! It all works out!
- Reach out to others around you!
- The more research the better
 - 7 year process
 - Understanding regulations
 - Tuition & child care needs assessments



CONTACT ME!

Phone: (620) 325-8290

Email: ksundberg@usd461.org

Stop by for a tour if you're in the area!



Kaitlyn Sundberg





Reno County Child Care Task Force

Business-Oriented Perspective

HEATHER FAULKNER



RENO COUNTY CHILD CARE TASK FORCE

Mission: To build systematic, sustainable, and equitable child care solutions that will benefit providers, parents, and businesses.

Goals: If we are successful, what will we have achieved in 5 years?

- Sustainability
- Systematic Improvements
- Expansion
- Innovation

www.renountychildcare.com



RENO COUNTY CHILD CARE TASK FORCE

Sustainability & Systematic Improvement Initiatives

- Retention Grants
- Infant Incentives
- Workforce Assistance through:
 - Training Initiatives
 - Provider of the Month
 - Provider Appreciation Programs
- Provider Directory
- Community Waitlist
- Increase Awareness, Education, and Advocacy efforts at the local and state level
- Intentional Communication Strategies to ensure trust and transparency through in-person gatherings, social media, website, email, and mailers

www.renocountychildcare.com



RENO COUNTY CHILD CARE TASK FORCE

Expansion: Increase capacity with quality child care that allows families 'choice' of care.

Center & School Based Care Slot Expansion: Accelerator Grant

- 6 partnerships across the county
- 11 facilities, 8 of which are outside Hutchinson city limits
- 417 slots created

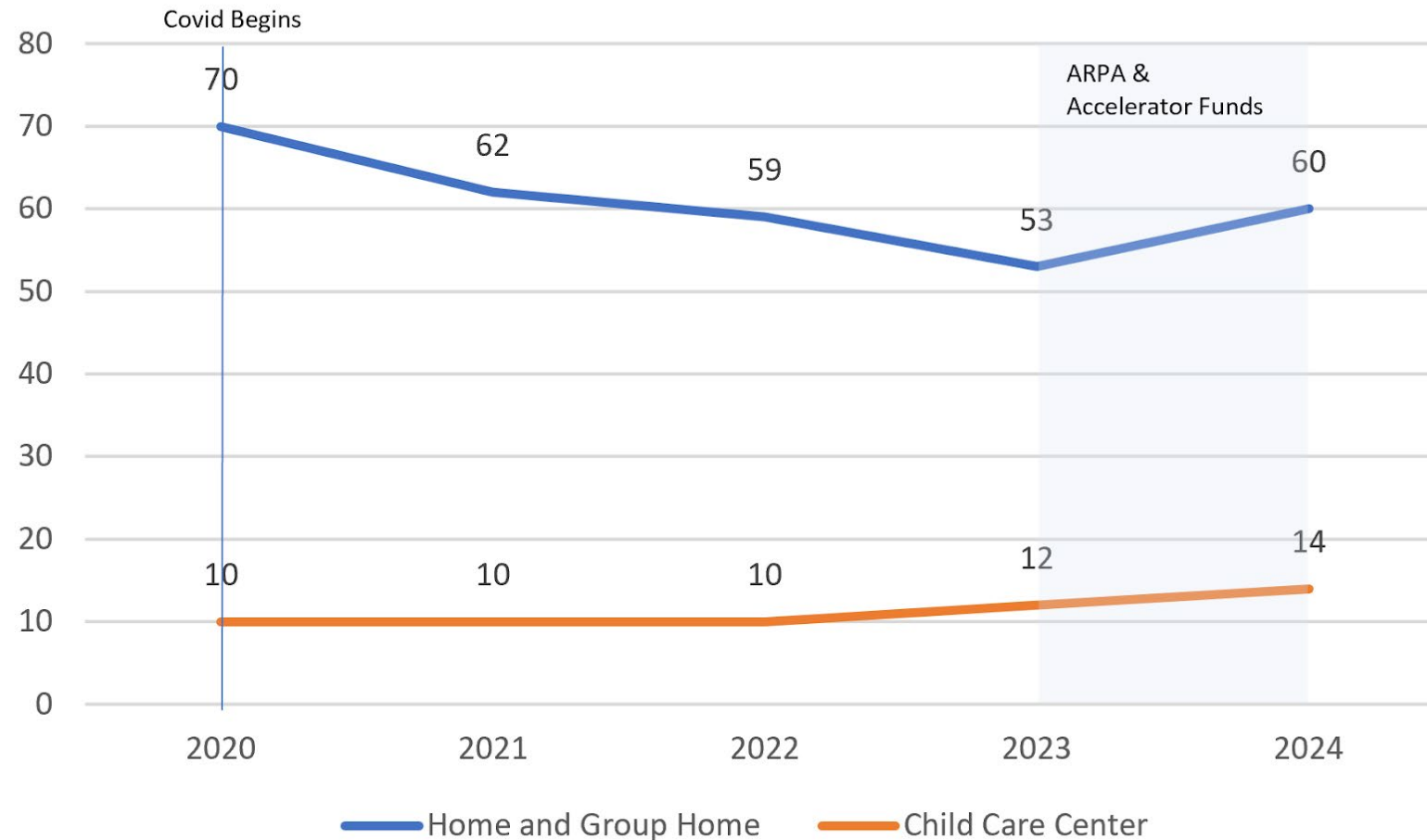
www.renocountychildcare.com



RENO COUNTY CHILD CARE TASK FORCE

Home Based Care Slot Expansion

Reno County Providers - As of January 1 per year



RENO COUNTY CHILD CARE TASK FORCE

Innovation

Reno County's child care issues cannot be tackled by providers alone. To truly revolutionize the system, it will take a sophisticated organization with resources and vision. The Reno County Child Care Task Force will launch a new child care cooperative to improve the sustainability of these efforts. We are re-inventing the child care industry by using data and knowledge, sharing services, and operating with maximum efficiency.



www.renocountychildcare.com



RENO COUNTY CHILD CARE TASK FORCE

Through market study and data analysis we have determined that strategic investments should focus on five key areas:

CENTRALIZED MANAGEMENT

Operational, financial, and regulatory complexities are managed more efficiently, allowing providers to focus on childcare

STANDARDIZATION OF PRACTICES

Uniform standards for training, quality, and facilities that ensures consistent, high-quality care across all providers

ECONOMIC SUSTAINABILITY

Leverage scale to manage costs, secure funding, and provide better pay and benefits, making the system financially sustainable

SCALABILITY AND FLEXIBILITY

Easier expansion or contraction of services and facilities, responding to community needs and opportunities

COMPREHENSIVE SUPPORT FOR PROVIDERS

Full range of benefits, professional development, and centralized services to reduce the burden on individual providers and attract quality staff

RENO COUNTY CHILD CARE TASK FORCE

**RENO
COUNTY**
CHILD CARE



info@renocountychildcare.com



www.renocountychildcare.com



@renocountychildcare



All In For Kansas Kids



**McPherson County Child
Care Expansion
Public/Private Funding Partnerships**

JENNIFER BURGARDT & BETSY DAVIS



MCPHERSON COUNTY CHILD CARE TASK FORCE

- McPherson County is our focus area
 - Cradle to Crayons in Moundridge
 - Marquette Learning Center in Marquette
 - Lindsborg Child Development Center in Lindsborg
 - Christ's Kids in Galva
 - Kids Kampus in McPherson
 - Playhouse Kids in McPherson
 - Over 500 kids served in project!

Public Private Partnership



MCPHERSON COUNTY CHILD CARE TASK FORCE

- Our project aims to provide financial resources that can be redirected towards long-term development and sustainability. To achieve this, we are focusing on diversifying our revenue streams and securing long-term support through community involvement. This will enable us to better support the families and children in our community.
- Development of expanded stakeholder involvement through private public partnership is our focus for sustainability.

Public Private Partnership



MCPHERSON COUNTY CHILD CARE TASK FORCE

- Matching opportunities because that's what we do as a local Community Foundation
 - Have a 20-year history of supporting local nonprofits through matching events
- Worked with known organizations and donors
- **Barrier:** Utilization of Kansas Employer Child Care Tax Credit
- Allowed individual centers to make it their own
 - Advocated for Board participation
 - Marquette: "Adopt a Kid"
- *Do what works well in your community*
 - Talk with your Community Foundation or Nonprofits

Public Private Partnership



MCPHERSON COUNTY CHILD CARE TASK FORCE

Jenn Burgardt

J2kConnections

j2kconnections@gmail.com

(785) 826-7933



Betsy Davis

McPherson County Community Foundation

betsy@mcphersonfoundation.org

(620) 245-9070



Public Private Partnership





Flint Hills

Business Initiative

LISA SEDERLIN ISAACSON



Flint Hills Community Accelerator Childcare Business Initiative (CBI)

- Manhattan, Kansas
- Lisa Sederlin Isaacson, Executive Director

IC Project Description/Overview

Collaborative approach to meeting the needs of the Manhattan community.

Community services in four pillar areas: work, education, health, and child care

Activities focused on preparing individuals for work


Education offerings leading to credentialing and certifications

Access to transportation, technology and child care

Childcare Business Initiative (CBI) – support and training for child care business owners

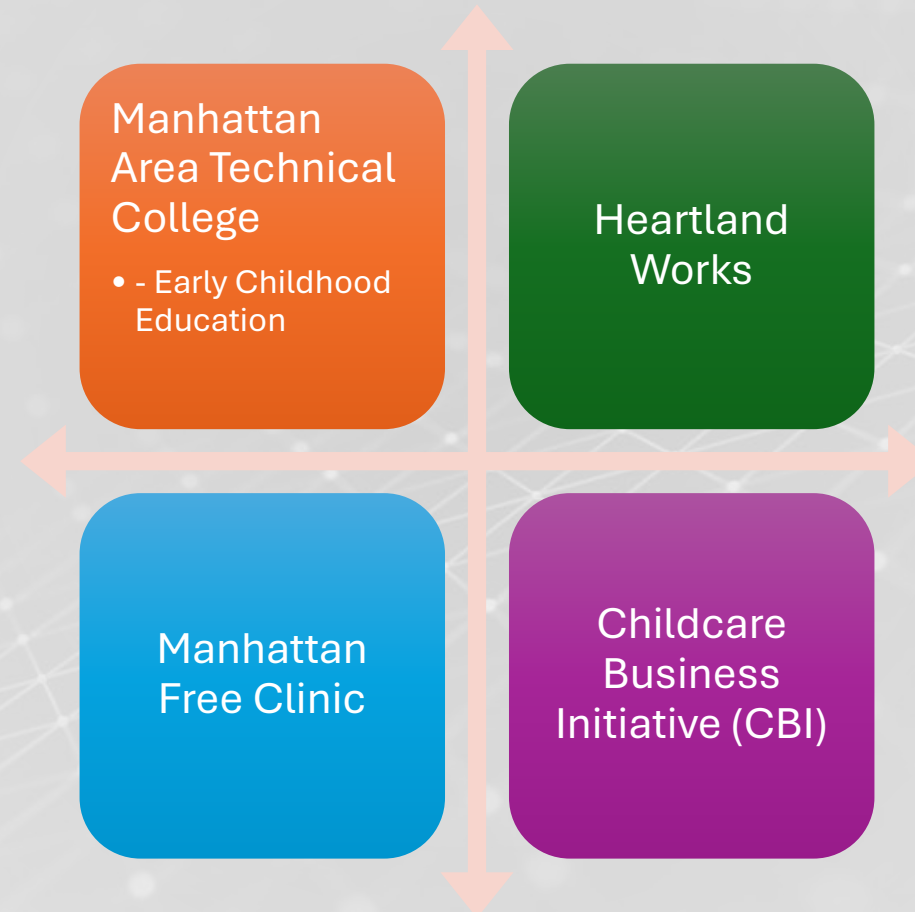
Flint Hills Community Accelerator



A photograph of a woman with dark, curly hair kissing a young child on the cheek. The child is smiling and wearing a white shirt with black polka dots. The woman is wearing a yellow top. The background is bright and out of focus.

The FHCA will serve an estimated 1,665 individuals each year, including 96 children ages 0-5 served through child care services.

Flint Hills Community Accelerator



Childcare Business Initiative (CBI)

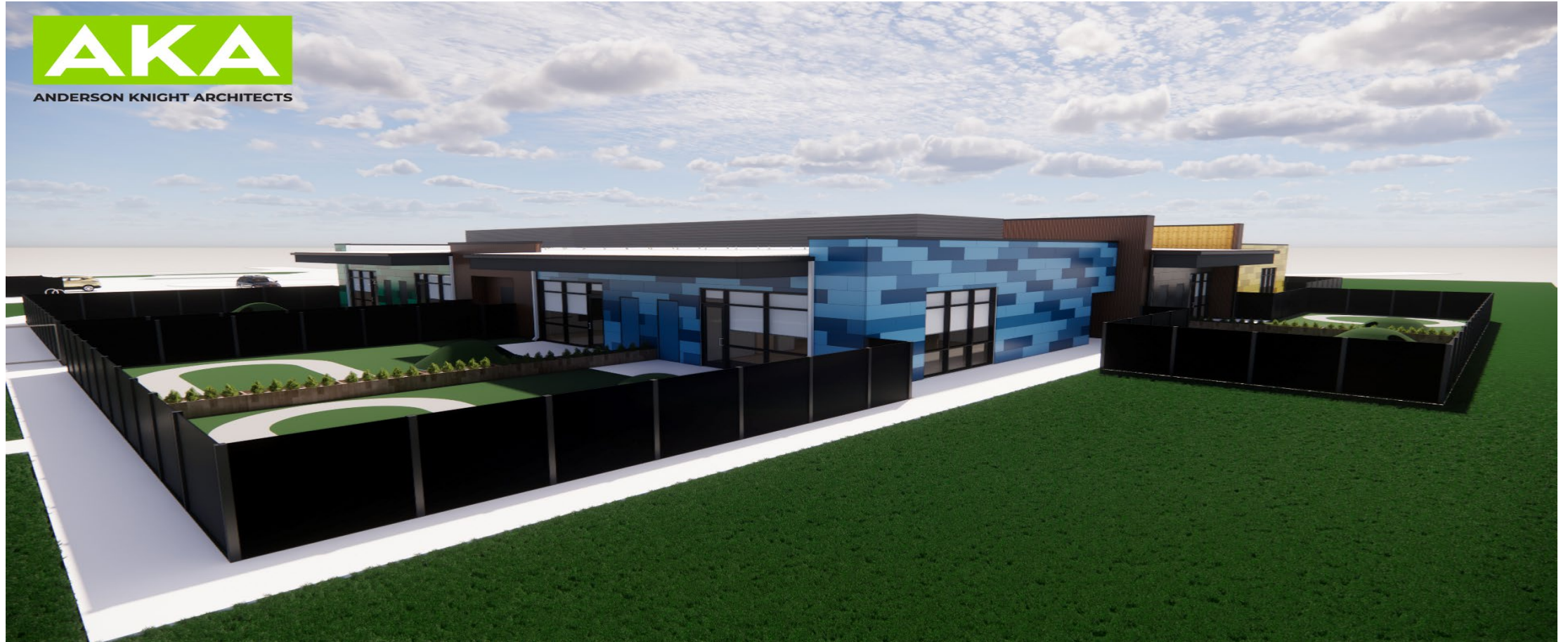
Eight Classrooms (Pods)

Each Pod is an individual Family Child Care Business

Providers are licensed through Kansas Department of Health and Environment (KDHE)

Providers learn and grow within the Pod for up to a year with the intention to launch their business into the surrounding community

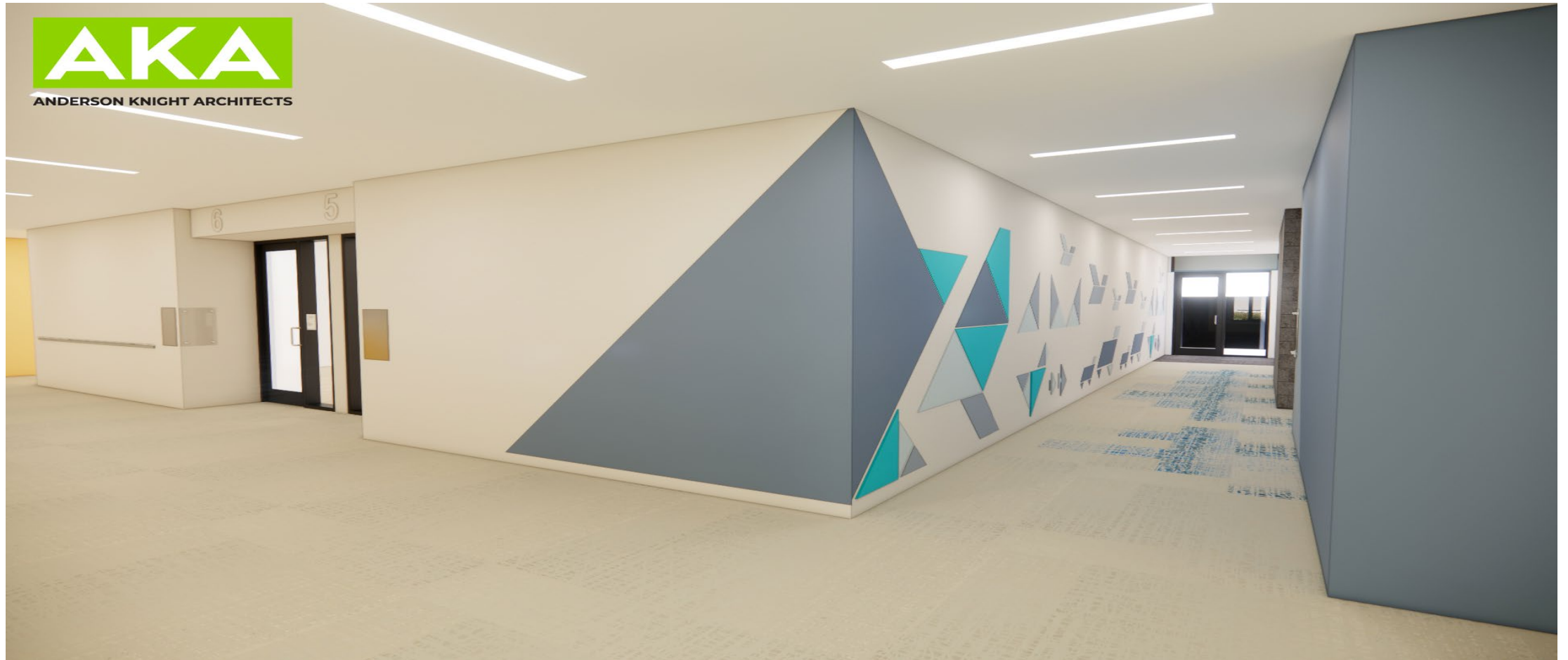
Rear of Building



Outdoor Play Space



Building Interior



AKA

ANDERSON KNIGHT ARCHITECTS



Childcare Business Initiative Pods



Highlights

Dedicated space to build a Family Child Care Business (including tables, chairs, cots and shelving, lockable storage, and kitchen appliances)

Pods are equipped with a fully functioning kitchenette so that providers will cook and serve USDA approved meals to the children in their care.

Providers can opt to provide weekend and after-hours care (24 hours) for manufacturing workers, first responders, etc.

Drop-in care will be available upon availability

Participant Supports

Marketing and Enrollment Support

One-on-one mentoring and support from a veteran Family Child Care provider

Support with accepting DCF subsidy and Raising Riley

Support with CACFP Food Program

Professional Development Opportunities and Partnerships

Ongoing support from the CBI upon launch into the community

High and Low of the Project

* High - Securing funding

* High - Receiving an impressive pool of applicants for the unique and specialized role of FHCA/CBI Executive Director – resulting in finding the right candidate for the position

* Low/Challenges – The Waiting! Countless behind-the-scenes meetings, approvals, plans, and decisions have gone into laying the foundation for what's to come.

“Think about pivots that had to be made and speak to the one that ended up benefitting the project.”



”If you could give one piece of advice from your project to another community trying to do the same thing what would that piece of advice be?”



Contact Information:

Lisa Sederlin Isaacson, M.S.

(785) 410-8303

lisaisaacson@manhattantech.edu

All In For Kansas Kids



SugarCreek

KARI CRONISTER & KRISTINA CULLISON



SUGARCREEK EARLY LEARNING CENTER



Frontenac



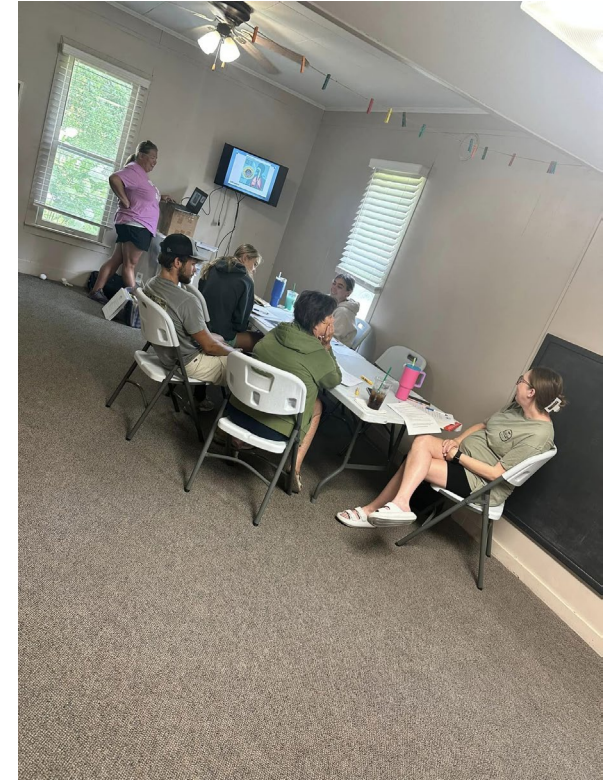
HOW IT STARTED



Substitute Pool



PIVOTS COMPLETE



**New Furniture and
Professionals**



HOW IT'S GOING



Program
Enhancements



UP AND RUNNING



Quality Child Care



SUGARCREEK

Kari Cronister

newfoundationschildcare@gmail.com

Kristina Cullison

kcullison@frontenac249.org

Contact Information





Tri-County Child Care Coalition

Resource Sharing/Rural Child Care

DEB KOLB



RESOURCE SHARING in a rural childcare landscape



Barber County UNITED, Inc.
Accelerator Grant awardee and administrator
Innovation Communities project administrator



TRI-COUNTY CHILDCARE COALITION
BARBER • HARPER • K I O W A

Barber County

Kiowa District Healthcare Child Care Center (new addition)
Medicine Lodge Daycare Inc. (Main Street remodel)
Barber County United, Inc. (Innovation Communities)

Harper County

Harper County Daycare – Anthony location (remodel)
Harper County Daycare – Attica location (new construction)

Kiowa County

Kiowa Co. Eco Devo – Greensburg location (new construction)

BCU A progressive coalition
instrumental in new approaches
to rural wellness issues.



BARRIERS... seemed to be all we could find



WE were our own
greatest barrier



2 MEET YOUR MENTORS

Katee Underwood lives in Coldwater, KS with her husband Phillip and children Mason, Jordyn, Kalee & Hudson. She now works as a Childcare Specialist for Kiowa County. She has a history of working in a licensed childcare facility and completing the continuing education hours needed to work in a licensed daycare. With multiple classes under her belt of childcare and on running your own business, she is here to assist you with your daily needs.



Julie Warner, a native of Medicine Lodge, KS, is delighted to be back in her hometown spearheading early childcare efforts as a consultant to the City of Medicine Lodge. With over 10 years of experience in early childhood, Julie brings a passionate commitment to simplifying the process of becoming an early childcare provider. She firmly believes that nothing is more crucial than compassion and nurturing during the early years of child development. Julie is dedicated to supporting and guiding individuals in the field to create a positive impact on the lives of young children.

3 YOUR CHILD-CARE COALITION CONTACTS

- Julie Warner, City of Medicine Lodge Early Childcare Consultant
- Rosie Mitchell, Kiowa District Healthcare Childcare Center Director
- Gayle McNett, Kiowa District Healthcare Leadership Development Liaison
- Emily Tompkinson, Harper County Childcare Director
- Katee Underwood, Kiowa County Economic Development Childcare Specialist
- Julie Lyon, Kiowa County Economic & Development Director
- Deb Kolb, Barber County United Director & Grant Coordinator

JUNE TCCG NEWSLETTER

1 MONTHLY FOCUS: ALL-ABILITIES ARSENAL

The All-Abilities Arsenal (AAA) is a collection of tools designed with special needs in mind. This arsenal includes sensory toys, a calming blackout tent, a crash pad, and more. In addition to these tools, TCCC Outreach Mentor, Emily Tompkinson, will be available to provide coaching and problem-solving support. Starting in June, local providers can access the Arsenal tools by contacting the TCCC Mentor in their area. Each arsenal can be checked in and out via a Google Sheet, which can be accessed using a scannable QR code. For coaching or any questions about the AAA, please email allabilitiesarsenal@gmail.com. The All-Abilities Arsenal is available in Anthony, Kiowa, Medicine Lodge, and Greensburg.



JOY
MENT

joys and
the TCCC
one of those

used to extend \$100
ea toward their tax
ment of KidKare
rdkeeping service.
+ \$100 BOOKWORK
your \$100 credit, please

medicine.lodge.ks.gov or
childcare@gmail.com
"2024 \$100 BOOKWORK
1/25, 2024. Contact us soon!



2 MEET YOUR MENTOR

Hi everyone! My name is Emily Tompkinson, and I was born and raised in Harper. I recently moved back with my husband. Between our daughter, chickens, ducks, and dogs, we stay busy! I have a bachelors degree in Early Childhood Inclusive Education, with 2 years teaching general education PreK, and one year Special Education preschool. I have always loved working with littles and am very excited to lead the way with All-Abilities Arsenal!



1 UPCOMING OUTREACH

- March - Business Management
 - April - Value of Curriculum
 - May - STEM Activities
 - June - Special Needs Prep
 - July - Conscious Discipline
- TCCC recognizes your commitment to our communities through childcare and are invested in the success of your endeavors.
Thank you for the valuable work you do.



FOLLOW US ON

@BARBERCOUNTYUNITED



TRI-COUNTY CHILD CARE COALITION



Barber County UNITED, Inc.

Deb Kolb, Executive Director

620-886-1759

barbercountyunited@gmail.com

Contact Information



REMINDERS AND NEXT STEPS

- **2024 Early Childhood Recommendations Panel**
Friday, October 18th – 9 am-11:30 am
- **Early Childhood Systems Building Webinar**
Wednesday, November 13th – 12-1:00 pm
- **Children's Cabinet Meeting**
Friday, December 6th – 9 am-12 pm

You can find **all** these meetings and more on our Children's Cabinet YouTube channel!

Stay Connected!





Stay Up to Date



[ALL IN FOR KANSAS KIDS NEWSLETTER](#)



[@KCCTF](#)



[KANSASCHILDRENSCABINET](#)





Thanks!

