

All In For Kansas Kids



Strengthening Early Childhood in Kansas

WEBINAR FEBRUARY 14, 2024



WELCOME

- Webinar Cadence Updates
 - AIFKK webinars will be held every 2nd Wednesday of the month in 2024
- Sign up to receive our All In For Kansas Kids e-Newsletter on the Children's Cabinet website – <http://www.kschildrenscabinet.org/>
- Presentation on the Early Childhood Integrated Data System by Emily Bertels Kaufman and Sushmita Samaddar of KU CPPR as well as information on Early Childhood Governance by Lindsay Orion of KU CPPR
- Early Childhood Systems Updates

Agenda



2024 Webinar Schedule

January 10th
February 14th
March 13th
April 10th
May 8th
June 12th
July 10th
August 14th
September 11th
October 9th
November 13th
December 11th

INTRODUCTIONS

Emily Bertels Kaufman
Research Project Manager

Sushmita Samaddar
Research Engineer Senior

Introducing the Distinct Count of Children Served Dashboard



Kansas
EARLY CHILDHOOD
Integrated Data

COUNT OF CHILDREN SERVED DASHBOARD

- Goal
 - Identify the distinct number (unduplicated count) of Kansas children being served in programs across different data systems at the state level and present the information in a visual way.
 - Phase 1: Gather aggregate data from publicly-available data sources
- Initial focus on the 4 systems serving children in Kansas:
 - Child care
 - Public pre-K (including Part B)
 - Part C
 - Home Visiting



Distinct Count of Children

[Kansas Early Childhood Data Trust](#)

[Data Governance](#)

[Distinct Count of Children](#)

[Authorized Projects](#)

How many children are served in the Kansas early childhood care and education system?

Where are those children located? What services are they receiving?

As of 2022, there are a total of 212,462 children across Kansas (ACS 1 Year Estimates). To effectively serve those children and their families, the Kansas early childhood system must know our children. Use the data dashboard to see:

- about how many children are being served in each of the 4 major early care and education programs;
- where children receive services by county and region;
- who those children are by age, sex, race, and ethnicity;
- plus other interactive features.

Are you a data enthusiast? Looking for program information?

[Read about the programs featured and methodology.](#)

All in one spot, with dynamic mapping and overlays. Turning data into actionable insights on behalf of our youngest Kansans.

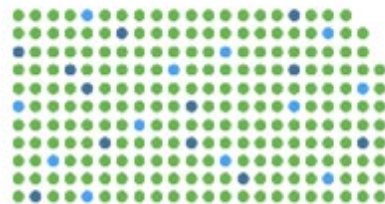
Landing page:

<https://kschildrenscabinet.org/distinct-count-of-children/>

- Context & high-level insights
- Link to methodology page
- Link to dashboard

Total Approximate Count of Children Birth Through 5 Served in 2023

113,523 Children



Disclaimer

Explore the interactive data dashboard



COUNT OF CHILDREN SERVED DASHBOARD DEMO

- Pop-up for general disclaimers
- Context in header text
- Overall view map
 - Counties or DCF region groupings
 - All Services, Child Care, Home Visiting, Part C, or PreK
 - Darker greens indicate higher counts

Basic Functionality



Number of children served in each county

There are an estimated 212,462 children birth through five in Kansas (American Community Survey, 2022)

OVERALL VIEW DETAILED VIEW

Data is from July 1, 2022 to June 30, 2023

DISCLAIMER SHARE THIS

Group As

Early Childhood Services

Counties

DCF Regions

All Services

Child Care

Home Visiting

Part C

PreK

Advanced Filters

KANSAS SERVES ~ **113,523 children** BIRTH THROUGH 5

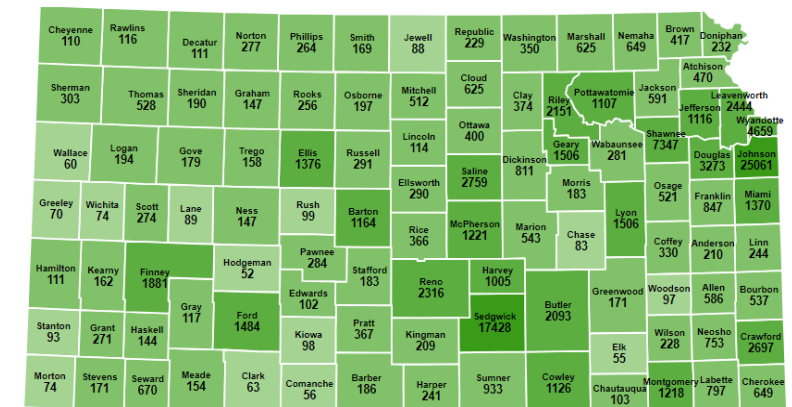
★ Data is suppressed for privacy

0 No children served

- No data

+

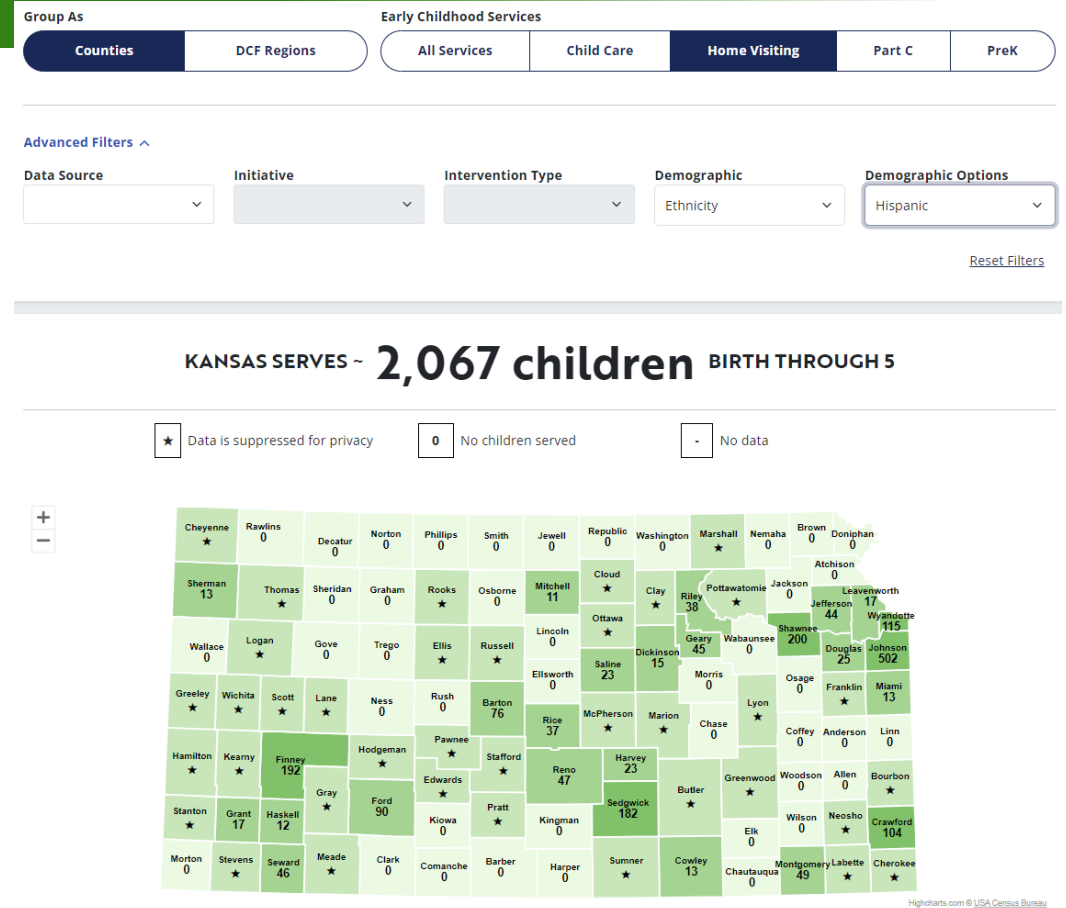
-



COUNT OF CHILDREN SERVED DASHBOARD DEMO

- Use case: Organization conducting a needs assessment to determine opportunities to expand equitable capacity to deliver home visiting
 - Organization is familiar with areas and regions in Kansas with higher proportions of children with identified ethnicity as Hispanic
 - Organization uses the dashboard to compile counts of children in this area served by various home visiting models.

Advanced Filters & Use Case 1



Advanced filters used

- Home Visiting: Ethnicity: Hispanic
- Home Visiting: All Data Sources: All Initiatives: Parents as Teachers: Ethnicity: Hispanic

COUNT OF CHILDREN SERVED DASHBOARD DEMO

- **Use case: Legislator Asking About Their District**
 - A state senator asks an agency about early childhood services in their district. A new company would like to locate in one of the cities within their district.
 - The state senator wants to provide accurate information as talking points for a delegation of the business leaders and chamber members.

Detail View & Use Case 2



Detailed View

View a breakdown of one county or more

There are an estimated 212,462 children birth through five in Kansas (American Community Survey, 2022)

Data is from July 1, 2022 to June 30, 2023

OVERALL VIEW DETAILED VIEW

DISCLAIMER SHARE THIS

County

X Dickinson County X Saline County

SALINE COUNTY AND DICKINSON COUNTY SERVES -

3,570

BIRTH THROUGH 5

SERVICES

SERVICES

served in Saline County and Dickinson County

Child Care	1,963
Home Visiting	386
Part C	482
PreK	547
TOTAL	3,378

Selected Counties



Highcharts.com

Kansas



Highcharts.com

Detail view used:

- **Saline & Dickinson counties (KS Senate District 24)**

COUNT OF CHILDREN SERVED DASHBOARD DATA

- This version of the dashboard might lack certain data sources or programs (for example privately funded home visiting or federally funded Head Start).
- Some data sources lacked demographic information, impacting certain views on the dashboard.
- Counts for some programs (like Parents as Teachers from KSDE) were calculated as per provider location.
- The KS ECIDS team worked with aggregate data for many data sources, so were unable to deduplicate across programs and services in some cases.

The methodology document outlines what's included or excluded in the dashboard for feasibility and access reasons.

Key Disclaimers



COUNT OF CHILDREN SERVED DASHBOARD CONTEXT

- **Kansas Early Childhood Data Trust**
 - share data and information to improve the quality, effectiveness, and equity of programs and services
 - *Authorized Project 1: ECBG and the Prevention of Foster Care Removals*
 - *Authorized Project 2: Distinct Count of Children in Early Care and Education Services*

- **Dashboard plans**
 - Census data
 - Next year's data
 - Additional explanatory text
 - *Exploring additional improvements, guided by feedback from users*
- **Stellar Insights webinars:** sharing knowledge, identifying needs, nurturing collaboration

**Context & Future
Plans**



RESOURCES

- Link to the dashboard: <https://kschildrenscabinet.org/distinct-count-of-children/>
- Link to methodology documentation: <https://kschildrenscabinet.org/wp-content/uploads/2023/12/Dashboard-Methodology.pdf>
- Contact information: ECIDS@ku.edu



All In For Kansas Kids



Early Childhood Governance

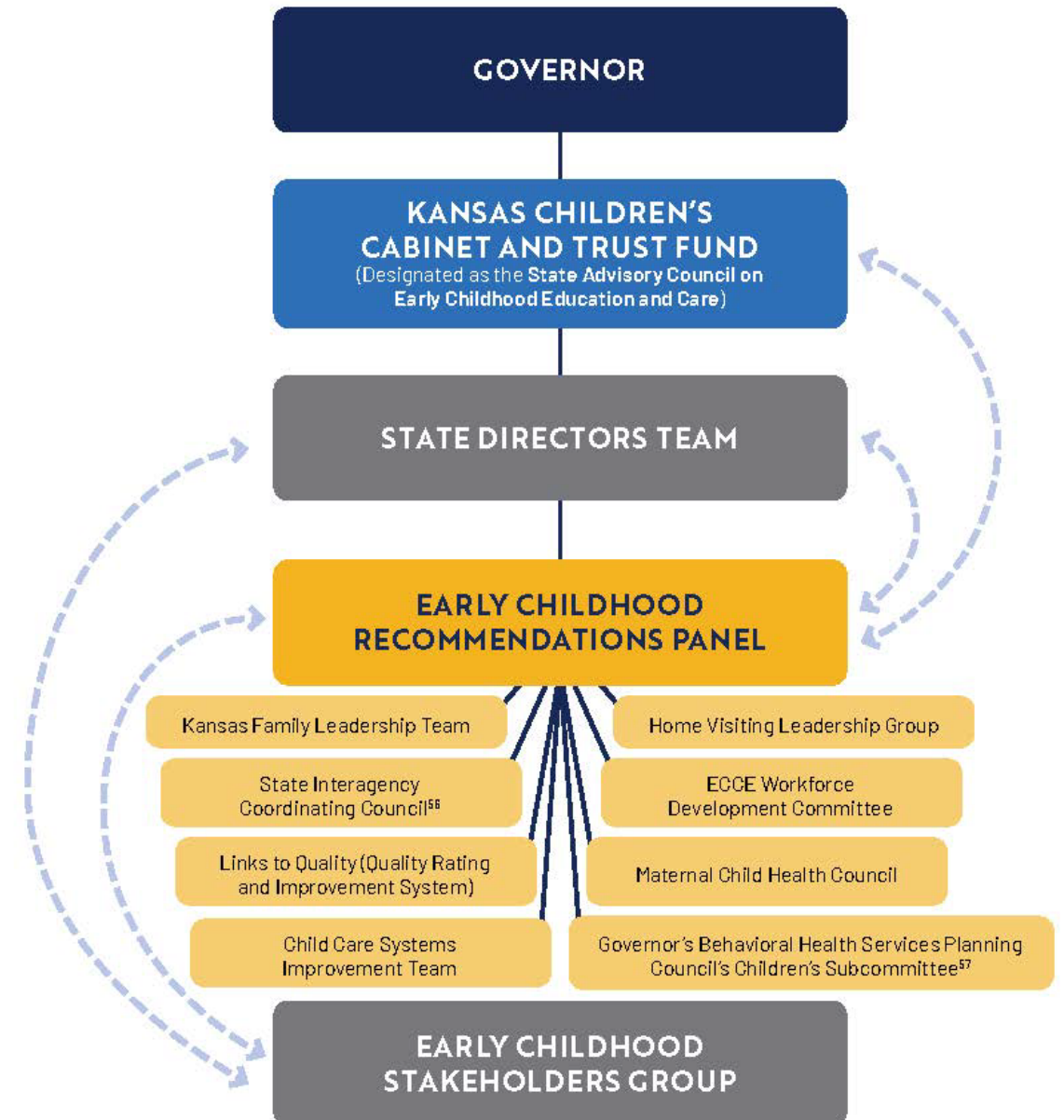
LINDSAY ORION, KU CPPR



EARLY CHILDHOOD GOVERNANCE

- Kansas [Executive Order 20-02](#) designates the Kansas Children's Cabinet and Trust Fund as the State Advisory Council on Early Childhood Education and Care
- [The Panel](#) is an advisory group to the Children's Cabinet to support these responsibilities

KANSAS EARLY CHILDHOOD GOVERNANCE STRUCTURE



EARLY CHILDHOOD RECOMMENDATIONS PANEL

- Meets monthly on the third Friday: 9:00-11:30 a.m.
- Live streamed on the Children's Cabinet YouTube channel
- [Kansans' Open Forum Comment Form](#): submit written comments or sign up to share verbal comments with the Panel during the Kansans Open Forum portion of the meeting
- Meeting materials are posted at kschildrenscabinet.org/panel-meetings

Meetings



EARLY CHILDHOOD GOVERNANCE SUMMIT

- 2024 Summit - Friday, February 16 | 9:00 – 11:30 a.m.
 - Live streamed on the [Children's Cabinet YouTube channel](#)
- Goal - Bring Early Childhood Governance Groups Together to:
 - Discuss opportunities for how we can work together to best accomplish the goals of the All in for Kansas Kids Strategic Plan
 - Share and celebrate each group's progress to date and discuss group goals and potential challenges in 2024
 - Make connections across the early childhood system for current and future work

Overview



EARLY CHILDHOOD GROUPS

- Early Childhood Recommendations Panel
- Child Care Systems Improvement Team
- Governor's Behavioral Health Services Planning Council's Children's Subcommittee
- Family Advisory Council
- Family First Statewide Interagency and Community Advisory Board
- Family Leadership Team
- Home Visiting Leadership Group
- Kansas Early Childhood Data Trust Governing Board
- Kansas Early Learning Standards
- Maternal Child Health Council
- State Interagency Coordinating Council
- Quality Recognition and Improvement System Advisory Board
- Workforce Development Advisory Group

Presenters



2023 EARLY CHILDHOOD GOVERNANCE SUMMIT

- The 2023 Summit featured updates from 13 different groups who support and inform programs and services across the Kansas early childhood mixed delivery system.
- Summary of the event can be found on the Children's Cabinet website



Summary



All In For Kansas Kids



Early Childhood
Systems Updates



THE CHILD CARE HEALTH CONSULTANT NETWORK AT CHILD CARE AWARE OF KANSAS

NEW provider grant opportunities are ending soon! Any new, licensed child care providers that have opened their doors in the last 3 months may be eligible!

- Health and Safety Grant: Applications due by March 7th
- Start-Up Stipend: Applications due by March 21st

Please reach out to the Child Care Health Consultant Network for more information!

Email: cchc@ks.childcareaware.org **Phone:** (785) 823-3343 **Website:** [CCHC - Child Care Aware](#)

**Grants and Funding
Opportunities**



EARLY LEARNING ADVOCACY DAY

Advocacy Day begins at the Kansas Health Institute to learn about advocating and telling your story. Later in the Statehouse, you can meet with your lawmakers, connect with early learning advocates, and have lunch with other professionals.

- March 6, 9:00 am–2:00 pm, in Topeka, KS
- Learn more and [Register Here](#) by February 23rd

Early Childhood Resources

Programs Include:

- You Belong Here – Elevate Your Voice
- Reading in the Rotunda
- Lawmaker Visits
- House and Senate Chamber Proceedings
- Early Learning Caucus
- Lawmaker Debrief
- Capitol Building Tours



EARLY CHILDHOOD CONFERENCES

Governor's Public Health Conference

- March 4-6 at the Hyatt Regency in Wichita, KS
- Join us for a transformative experience as we bring together national speakers, state leaders, and regional experts to address crucial issues in public health. Together we aim to build a healthier and more resilient Kansas!
- Learn more and register [here!](#)

Camp GWC Early Childhood Annual Conference

- April 12 (virtual)-13 (in-person) at the Hyatt Regency in Wichita, KS
- Featuring a variety of workshops, keynote speakers, and networking opportunities designed to enhance the knowledge and skills of those working with children
- Learn more [here!](#)

**Professional
Development**



REMINDERS AND NEXT STEPS

- **2024 Early Childhood Governance Summit**
Friday, February 16th – 9 am-11:30 am
- **Early Childhood Systems Building Webinar**
Wednesday, March 13th – 12-1:00 pm
- **Children's Cabinet Meeting**
Friday, April 5th – 9 am-12 pm

You can find **all** these meetings and more on our Children's Cabinet YouTube channel!

Stay Connected!





Stay Up to Date



[ALL IN FOR KANSAS KIDS NEWSLETTER](#)



[@KCCTF](#)



[KANSASCHILDRENSCABINET](#)





Thanks!

